

CONTRACT No. 294/C/8732 (Con. 8B).

FRAME Nos. from 15501 to 18500.

ENGINE Nos. from 15501 to 18500.

**A LIST OF
Spare & Replacement Parts**

FOR THE

ROYAL ENFIELD

350 c.c. SIDE VALVE

MOTOR CYCLE

MODEL WD/C

THE

ENFIELD CYCLE CO. LTD.

Owing to increased cost of material, production, etc., List prices of spare parts are advanced 10% until further notice.

A LIST OF
Spare and Replacement Parts
FOR THE

ROYAL ENFIELD

350 c.c. SIDE VALVE
MOTOR CYCLE
MODEL **WD/C**

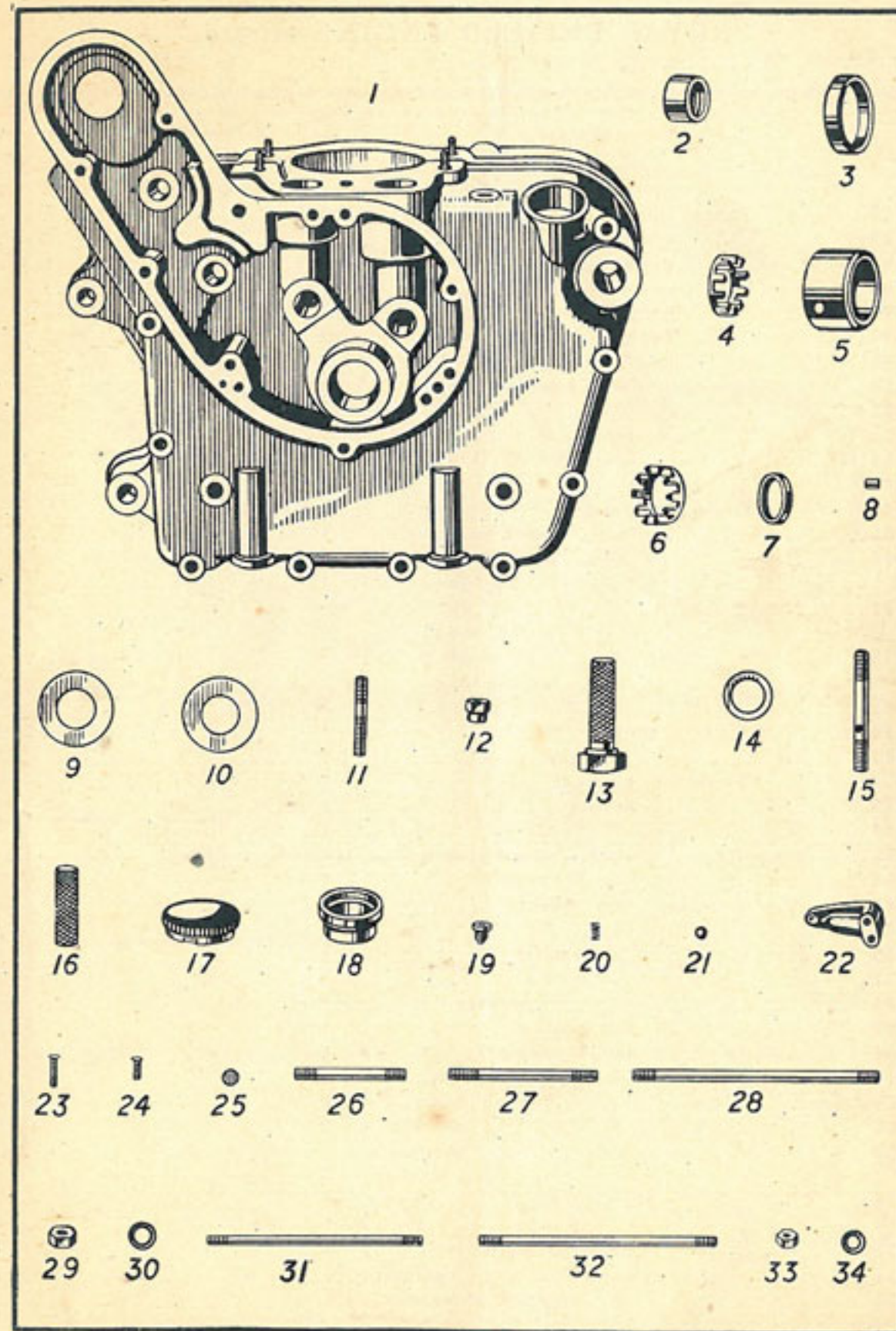
*Units when demanding Spares for "B"
and "R.A.S.C." Machines will quote
Proprietary or M.T. Part Nos. where
applicable.*



THE ENFIELD CYCLE CO. LTD.

ROYAL ENFIELD ENGINE

Illus. No.	No. of part.	Description.	No. per set	M.T. or Proprietary No.	£	s.	d.
	28300	346c.c. S.V. engine, with magneto and carburettor	1	Price on application.			
1	28267	Crankcase assembly with fixed fittings	1		6	5	0
2	16291	bearing bush (timing side)	1		0	1	8
3	21187	roller race (timing side)	1		0	2	9
4	21189	" cage	1		0	3	8
5	23515	" race (driving side)	1		0	3	4
6	24569	" cage	2		0	2	9
7	24570	" distance piece (driving side)	1		0	0	2
8	SE342	bearing roller, price per doz.	30	MT7/6624	0	2	9
9	21191	end washer	2		0	0	6
10	21448	thrust washer	2		0	0	9
11	24796	cylinder stud $\frac{1}{8}$ " dia.	4		0	0	2
12	7216	" nut	4		0	0	2
13	24173	oil plug and filter	2		0	2	0
14	24178	" washer	2		0	0	1
15	13919	" filter stud	2		0	0	6
16	13995	" gauze and ring	2		0	0	6
17	19670	" filler cap	1		0	2	3
18	18275	" collar	1		0	1	0
19	22198	non-return valve plug	1		0	0	3
20	22199	" spring	1		0	0	2
21	$\frac{3}{16}$ " dia.	" ball	1	MT7/162	0	0	1
22	26649	breather body	1		0	2	3
23	26648	" screw (long)	2		0	0	2
24	26664	" (short)	1		0	0	2
25	26651	disc valve	2		0	0	2
26	23517	stud $\frac{5}{16}$ " dia. $2\frac{3}{16}$ " long	1		0	0	3
27	13413	" " $3\frac{7}{16}$ " long	1		0	0	3
28	17476	" " $5\frac{1}{2}$ " long	2		0	0	3
29	27304	" nut	7		0	0	2
30	8634	" washer	7		0	0	1
31	23516	" $\frac{1}{2}$ " dia. $4\frac{11}{16}$ " long	3		0	0	2
32	22681	" " $5\frac{1}{2}$ " "	6		0	0	3
33	26998	" nut	18		0	0	1
34	82	" washer	18	MT5/9727	0	0	1

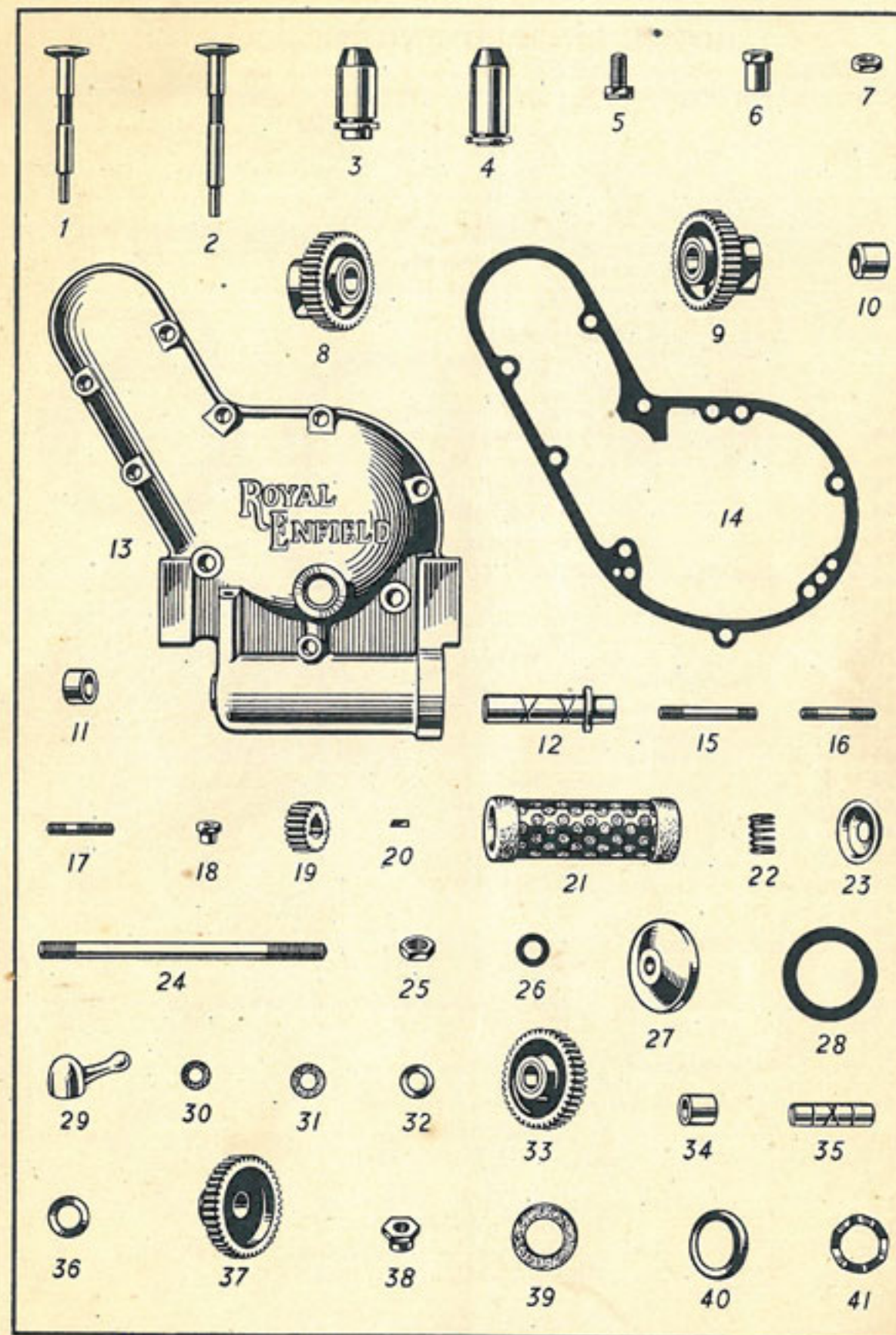


See opposite page for description and price.

8732 / 15 / 1

ROYAL ENFIELD ENGINE—Contd.

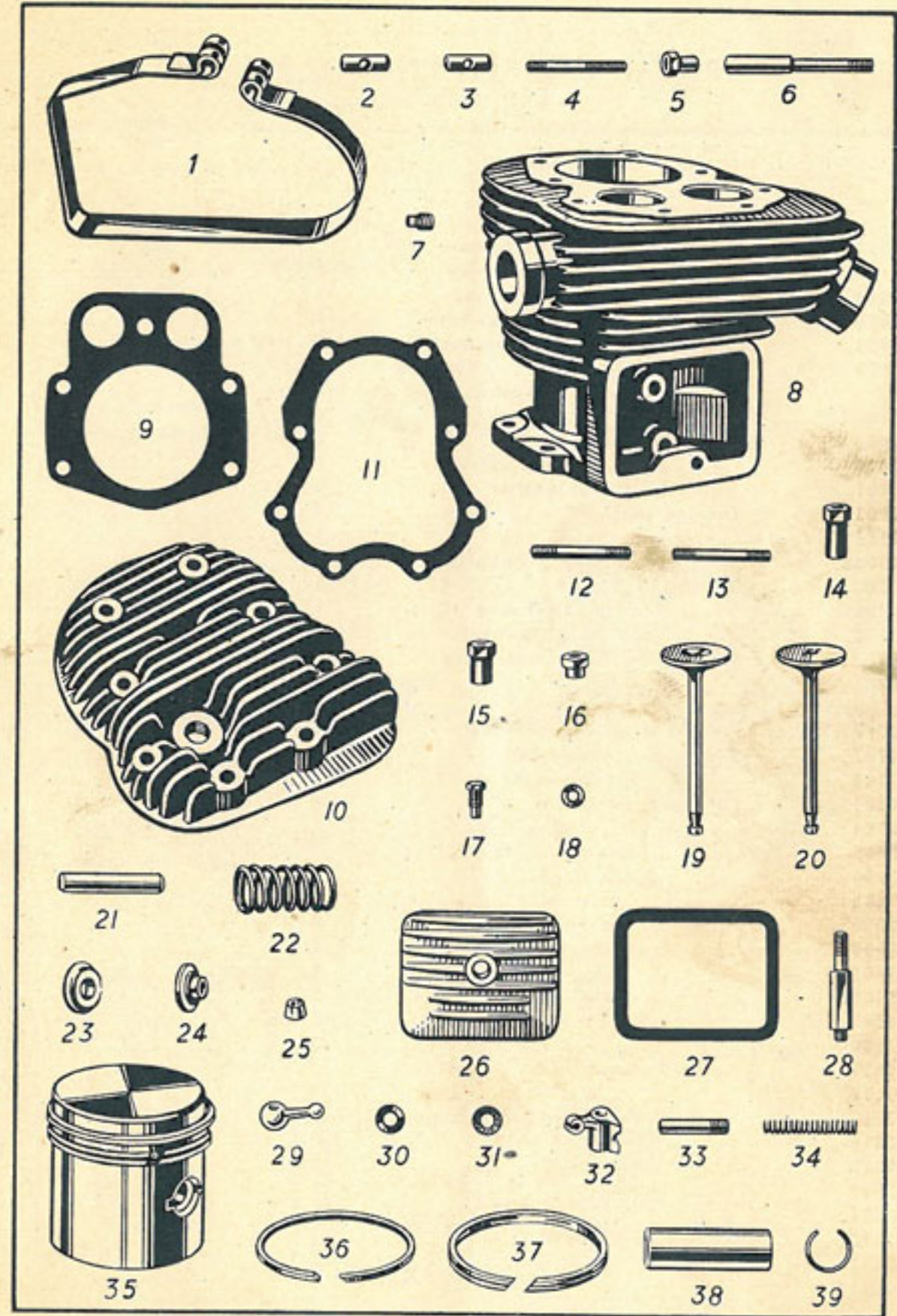
Illus. No.	No. of part.	Description.	No. per set	M.T. or Proprietary No.	£	s.	d.
1	19195 ..	Tappet (inlet) ..	1		0	4	6
2	19196 ..	" (exhaust) ..	1		0	4	6
3	19193 ..	" guide (inlet) ..	1		0	2	9
4	19194 ..	" " (exhaust) ..	1		0	2	9
5	14496 ..	" body ..	2		0	0	9
6	19486 ..	" head ..	2		0	0	9
7	14403 ..	" locknut ..	2		0	0	2
8	20024 ..	Cam (inlet) with bushes ..	1		0	13	6
9	20025 ..	" (exhaust) " ..	1		0	13	6
10	19835 ..	" bush (long) ..	2		0	1	0
11	19836 ..	" " (short) ..	2		0	1	0
12	23505 ..	" spindle ..	2		0	3	4
13	28249 ..	Timing gear cover ..	1		1	17	6
14	22605 ..	" " " joint washer ..	1		0	0	8
15	13998 ..	" " " stud $\frac{1}{2}$ " dia. $2\frac{1}{8}$ " long ..	1		0	0	2
16	27981 ..	" " " " $\frac{1}{2}$ " dia. $1\frac{1}{2}$ " long ..	6		0	0	2
17	13477 ..	" " " " $\frac{1}{2}$ " dia. $1\frac{1}{2}$ " long ..	2		0	0	2
18	27982 ..	" " " " $\frac{1}{2}$ " nut ..	9		0	0	2
19	13754 ..	" pinion ..	1		0	2	9
20	9410 ..	" " key ..	1		0	0	2
21	28253 ..	Oil cleaner element ..	1		0	6	0
22	28259 ..	" " spring ..	1		0	0	2
23	28254 ..	" " " cup ..	1		0	0	3
24	28255 ..	" " stud $\frac{3}{8}$ " dia. $6\frac{1}{2}$ " long ..	1		0	0	6
25	26996 ..	" " " locknut ..	1		0	0	2
26	13785 ..	" " " washer ..	1		0	0	1
27	28256 ..	" " " cap ..	1		0	1	0
28	28258 ..	" " " washer ..	1		0	0	3
29	28257 ..	" " " nut ..	1		0	0	9
30	6194 ..	" " " washer ..	1		0	0	1
31	18793 ..	" " " felt washer ..	1		0	0	1
32	8894 ..	" " " thrust washer ..	1		0	0	1
33	22617 ..	Magdyno drive idler pinion with bush ..	2		0	5	0
34	19200 ..	" " " " bush ..	2		0	1	0
35	23506 ..	" " " " spindle ..	2		0	1	4
36	19552 ..	" " " " thrust washer ..	4		0	0	3
37	18575 ..	" pinion ..	1		0	5	0
38	14538 ..	" " nut ..	1		0	0	3
39	21423 ..	" " felt washer ..	1		0	0	3
40	18993 ..	" " " retainer ..	1		0	0	2
41	19352 ..	" " " corrugated washer ..	1		0	0	6



See opposite page for description and price.

ROYAL ENFIELD ENGINE—Contd.

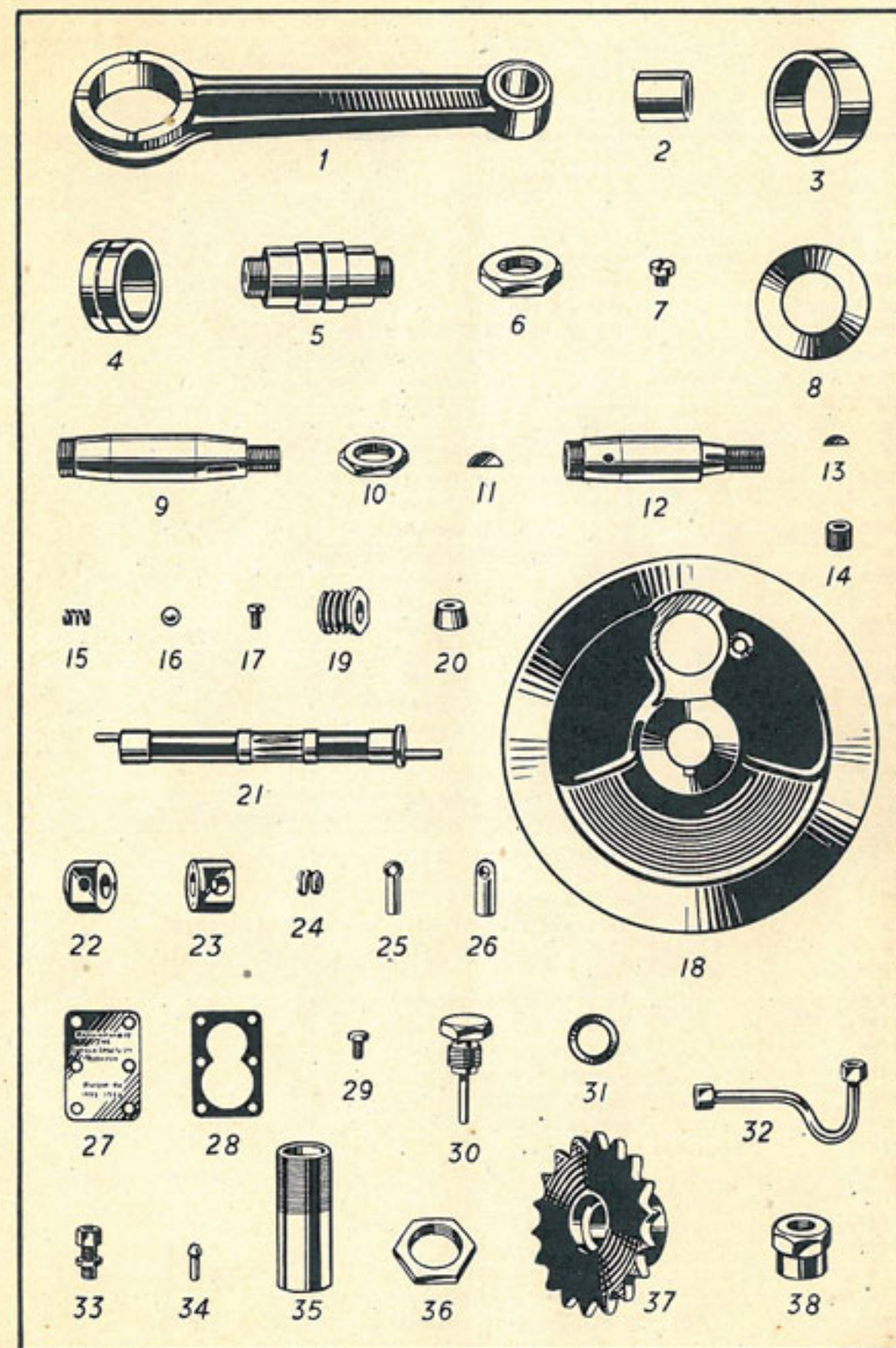
Illus. No.	No. of part.	Description.	No. per set	M.T. or Proprietary No.	£	s.	d.
1	22899	Magdyno strap	1		0	2	0
2	19068	" " trunnion (plain)	1		0	0	3
3	19069	" " " (tapped)	1		0	0	4
4	19202	" " " stud 1/4" dia.	1		0	0	3
5	12881	" " " " " nut	1		0	0	3
6	23584	" " anchor stud (crankcase)	1		0	0	2
7	19065	" " dowel	2		0	0	2
8	24470	Cylinder barrel with valve guides	1		3	5	0
9	24494	" " joint washer	1		0	0	2
10	24785	" " head	1		1	5	0
11	15475	" " joint washer	1		0	2	0
12	15600	" " stud 2 1/8" long	6		0	0	3
13	15601	" " " 2 1/4" "	2		0	0	3
14	16748	" " " nut 1 1/4" long	4		0	0	3
15	16749	" " " " 1" "	2		0	0	3
16	7216	" " " " 1/2" "	2		0	0	2
17	16714	" " " plug	1		0	0	2
18	16715	" " " washer	1	MT5/17009	0	0	1
19	16566	Valve (inlet)	1		0	5	6
20	15488	" (exhaust)	1		0	6	6
21	13321	" guide	2		0	2	6
22	150097	" spring	2		0	1	0
23	8724	" " collar (top)	2		0	0	6
24	13324	" " " (bottom)	2		0	0	6
25	15489	" split collar	2		0	0	6
26	23083	" spring cover	1		0	1	0
27	21834	" " joint washer	1		0	0	6
28	24258	" " " stud	1		0	0	3
29	17385	" " " " nut	1		0	0	6
30	8634	" " " " 1/16" steel washer	1		0	0	1
31	25990	" " " " fibre washer	1	MT1/37010	0	0	1
32	25567	" lifter	1		0	2	6
33	21836	" " spindle	1		0	0	3
34	12679	" " spring	1		0	0	1
35	26761	Piston complete with rings and gudgeon pin	1		1	5	0
	26761B	" " " (.015" oversize)	1		1	5	0
	26761C	" " " (.030" ")	1		1	5	0
36	12375	" ring (compression)	2		0	1	0
	12375B	" " (" .015" oversize)	2		0	1	0
	12375C	" " (" .030" ")	2		0	1	0
37	26239	" " (slotted scraper)	1		0	1	6
	26239B	" " (" .015" oversize)	1		0	1	6
	26239C	" " (slotted scraper .030" oversize)	1		0	1	6
38	22595	Gudgeon pin	1		0	2	9
39	20363	" " keeper ring	2		0	0	2



See opposite page for description and price.

ROYAL ENFIELD ENGINE—Contd.

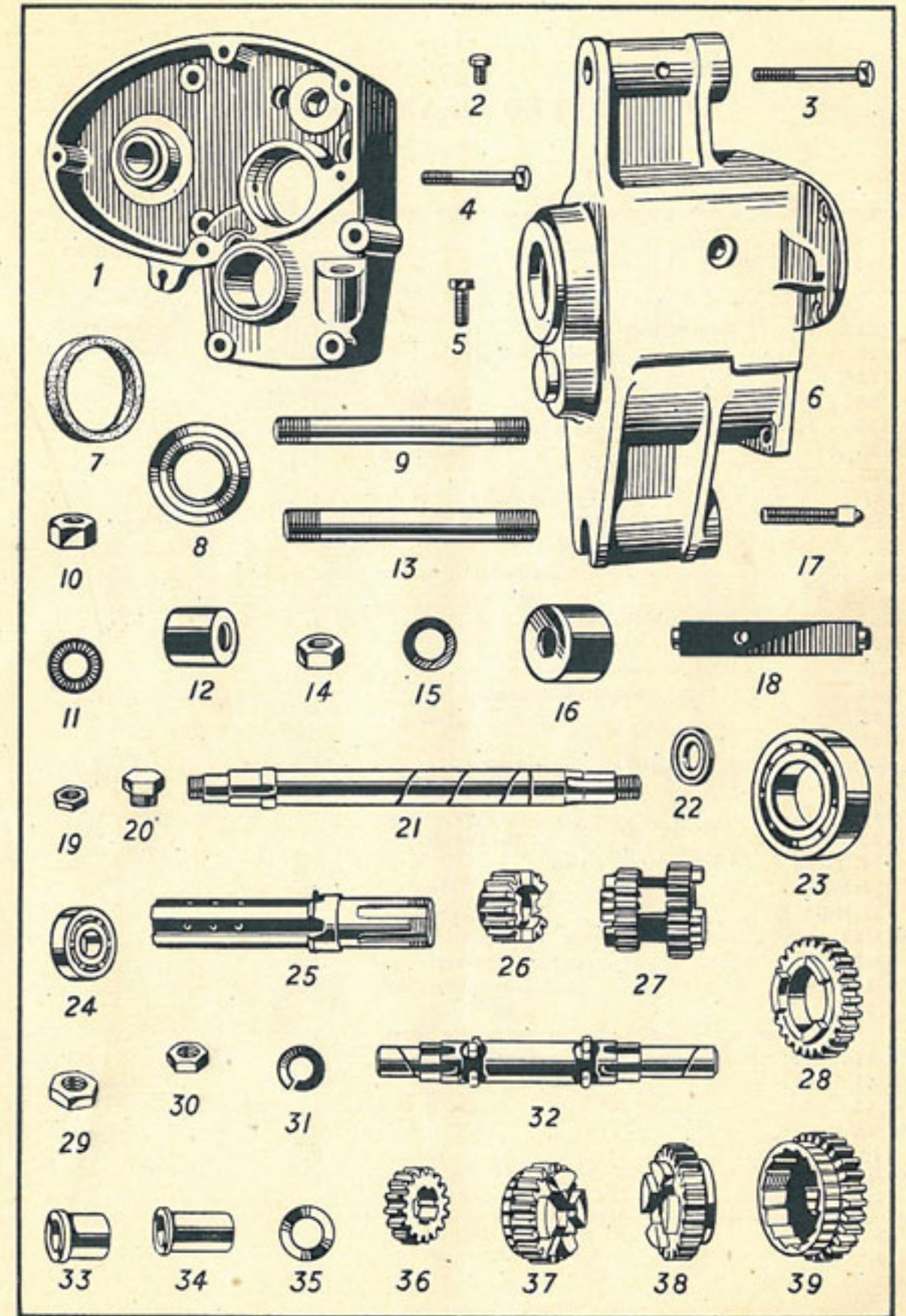
Illus. No.	No. of part.	Description.	No. per set	M.T. or Proprietary No.	£	s.	d.
	27311 ..	Connecting rod and crankpin assembly	1	2	5	0
1	22646 ..	" " with bushes	1	1	4	6
2	22629 ..	" " small end bush	1	0	2	3
3	16651 ..	" " large end bush	1	Not serviced	0	6	6
4	19885 ..	" " " floating bush	1	0	7	6
5	24593 ..	Crank pin	1	0	10	0
6	27082 ..	" " nut	2	0	0	6
7	16476 ..	" " " keeper screw	2	0	0	2
8	26707 ..	" " " thrust washer	2	0	1	0
9	26901 ..	Driving shaft	1	0	7	0
10	141545 ..	" " nut	1	0	0	6
11	145633 ..	" " key (flywheel)	1	0	0	3
12	26705 ..	Timing shaft	1	0	7	6
	141545 ..	" " nut (as illus. 10)	1	0	0	6
13	16576 ..	" " key (flywheel)	1	0	0	2
14	26703 ..	" " oil release plug	1	0	0	3
15	26704 ..	" " " " " spring ball	1	0	0	1
16	$\frac{5}{16}$ " dia.	" " " " " ball	1	MT7/168	0	0	1
17	8718 ..	Keeper screw for shaft nuts	2	0	0	1
18	24747 ..	Flywheel (timing side)	1	1	2	0
	27244 ..	" (driving side)	1	1	2	0
19	24284 ..	Oil pump worm	1	0	1	0
20	16704 ..	" " plug	1	0	0	2
21	26328 ..	" " spindle	1	0	7	6
22	13904 ..	" " disc (feed)	1	0	2	9
23	27452 ..	" " " (return)	1	0	2	9
24	7326 ..	" " " spring	2	0	0	2
25	13906 ..	" " plunger (feed)	1	0	1	0
26	14461 ..	" " " (return)	1	0	1	0
27	14456 ..	" " cover	2	0	0	3
28	14786 ..	" " " washer	2	0	0	1
29	27196 ..	" " " screw	12	0	0	1
30	24297 ..	" " feed plug	1	0	1	3
31	24177 ..	" " " washer	1	0	0	1
32	27312 ..	" " pipe to cylinder barrel complete	1	0	2	0
33	22213 ..	" " union and nut	3	0	0	3
34	22212 ..	" " nipple	3	0	0	2
35	23868 ..	Induction pipe	1	0	1	6
36	8701 ..	" " lock nut	1	0	1	0
37	27172 ..	Engine sprocket 18 T.	1	0	7	6
38	28330 ..	" " nut	1	0	0	6
	145633 ..	" " key (as illus. 11)	1	0	0	3



See opposite page for description and price.

FOUR-SPEED GEAR BOX

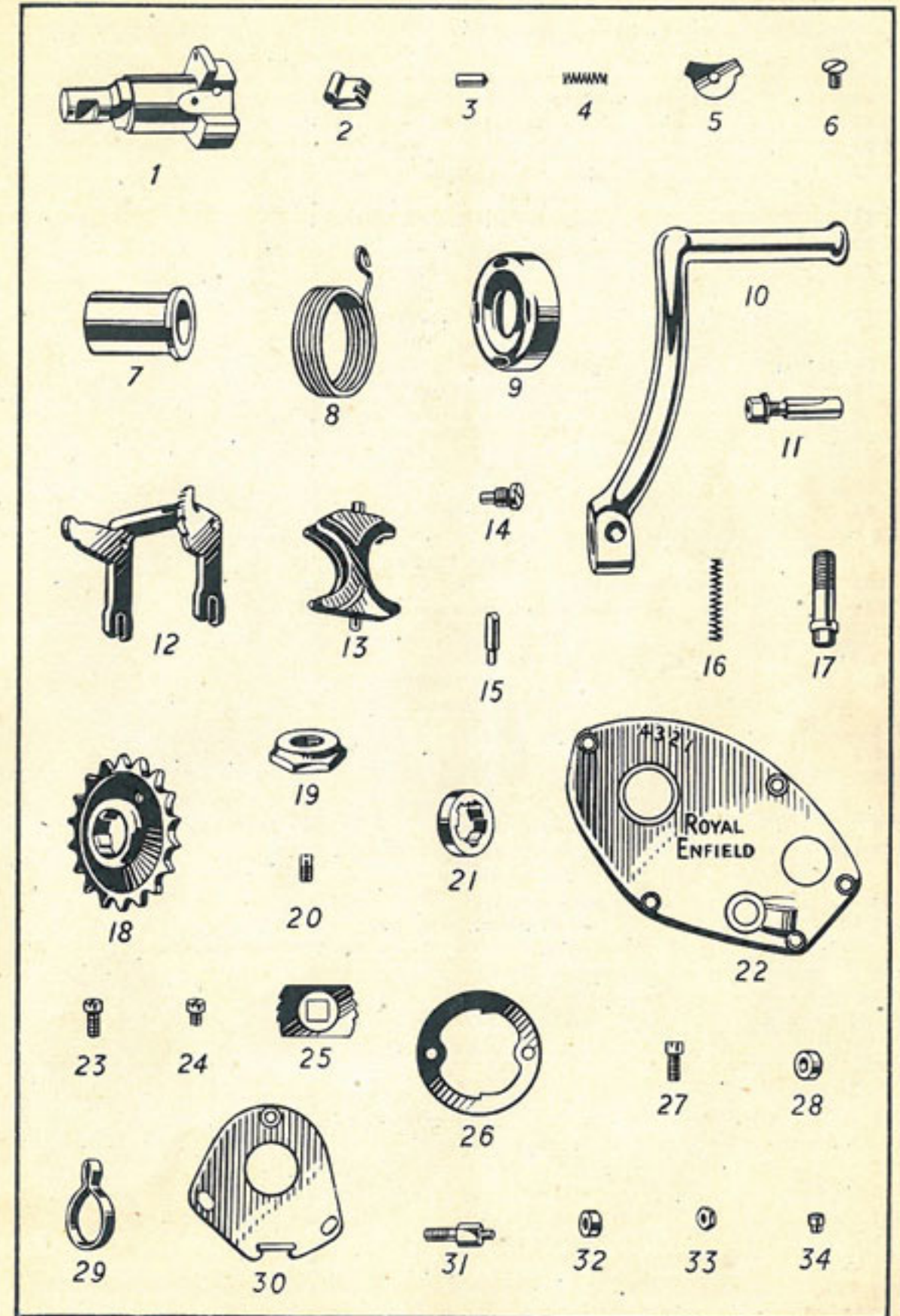
Illus. No.	No. of part.	Description.	No. per set	M.T. or Proprietary No.	£	s.	d.
1	27357 ..	Gearbox complete ..	1	8	10	0
2	26625 ..	" cover ..	1	1	7	6
3	H60 ..	" " $\frac{3}{16}$ " pin ..	2	0	0	3
4	HJ54A ..	" " $\frac{1}{4}$ " bolt, $2\frac{1}{4}$ " long ..	1	0	0	4
5	HJ54B ..	" " " $2\frac{3}{8}$ " long ..	2	0	0	4
6	HJ54C ..	" " " 1 in. long ..	1	0	0	4
7	HJ2 ..	" case ..	1	1	7	6
8	F13 ..	" felt washer ..	1	0	0	4
9	F14 ..	" dished washer ..	1	0	0	4
10	12238 ..	" attachment stud (top, $\frac{1}{2}$ " dia.) ..	1	0	0	6
11	7598 ..	" " " $\frac{1}{2}$ " nut ..	2	0	0	3
12	15511 ..	" " " locking collar ..	2	0	0	3
13	25333 ..	" " " distance piece ..	1	0	0	9
14	25185 ..	" " " (bottom, $\frac{1}{2}$ " dia.) ..	1	0	0	6
15	8350 ..	" " " $\frac{3}{8}$ " nut ..	2	0	0	4
16	8351 ..	" " " $\frac{3}{8}$ " washer ..	1	0	0	1
17	25334 ..	" " " distance piece ..	1	0	0	9
18	23619 ..	" adjusting pin ..	1	0	0	3
19	25197 ..	" " " trunnion ..	1	0	1	0
20	26997 ..	" " " $\frac{1}{16}$ " locknut ..	1	0	0	2
21	E140 ..	" oil filler plug ..	1	0	0	6
22	HJ7 ..	Mainshaft ..	1	1	7	6
23	HJ71 ..	" oil thrower ..	1	0	1	6
24	F15 ..	" ball race $2\frac{1}{2}$ " x $1\frac{1}{2}$ " x $\frac{1}{2}$ " ..	1	MT7/6019	0	10	9
25	F16 ..	" " $35 \times 15 \times 11$ mm. ..	1	MT7/6069	0	7	9
26	HJ8 ..	" sleeve ..	1	1	0	0
27	HJ9 ..	" 15 T high gear pinion ..	1	0	7	9
28	HJ11 ..	" 21 T x 18 T sliding gear ..	1	1	2	0
29	HJ12 ..	" 26 T. low gear pinion ..	1	0	12	6
30	HJ55 ..	" nut (R.H. thread) ..	1	0	0	6
31	HJ56 ..	" " (L.H. thread) ..	1	0	0	6
32	HJ57 ..	" spring washer ..	1	0	0	2
33	HJ13 ..	Layshaft ..	1	0	17	6
34	HJ14 ..	" bush (case end) ..	1	0	2	6
35	HJ15 ..	" " (footstart end) ..	1	0	2	6
36	HJ15A ..	" washer ..	1	0	0	4
37	HJ17 ..	" 16 T. low gear pinion ..	1	0	9	6
38	HJ18 ..	" 21 T. second gear pinion ..	1	0	17	6
39	HJ19 ..	" 24 T. third gear pinion ..	1	0	18	6
40	HJ20 ..	" 27 T. high gear and footstart wheel ..	1	0	17	6



See opposite page for description and price.

FOUR-SPEED GEAR BOX—Contd.

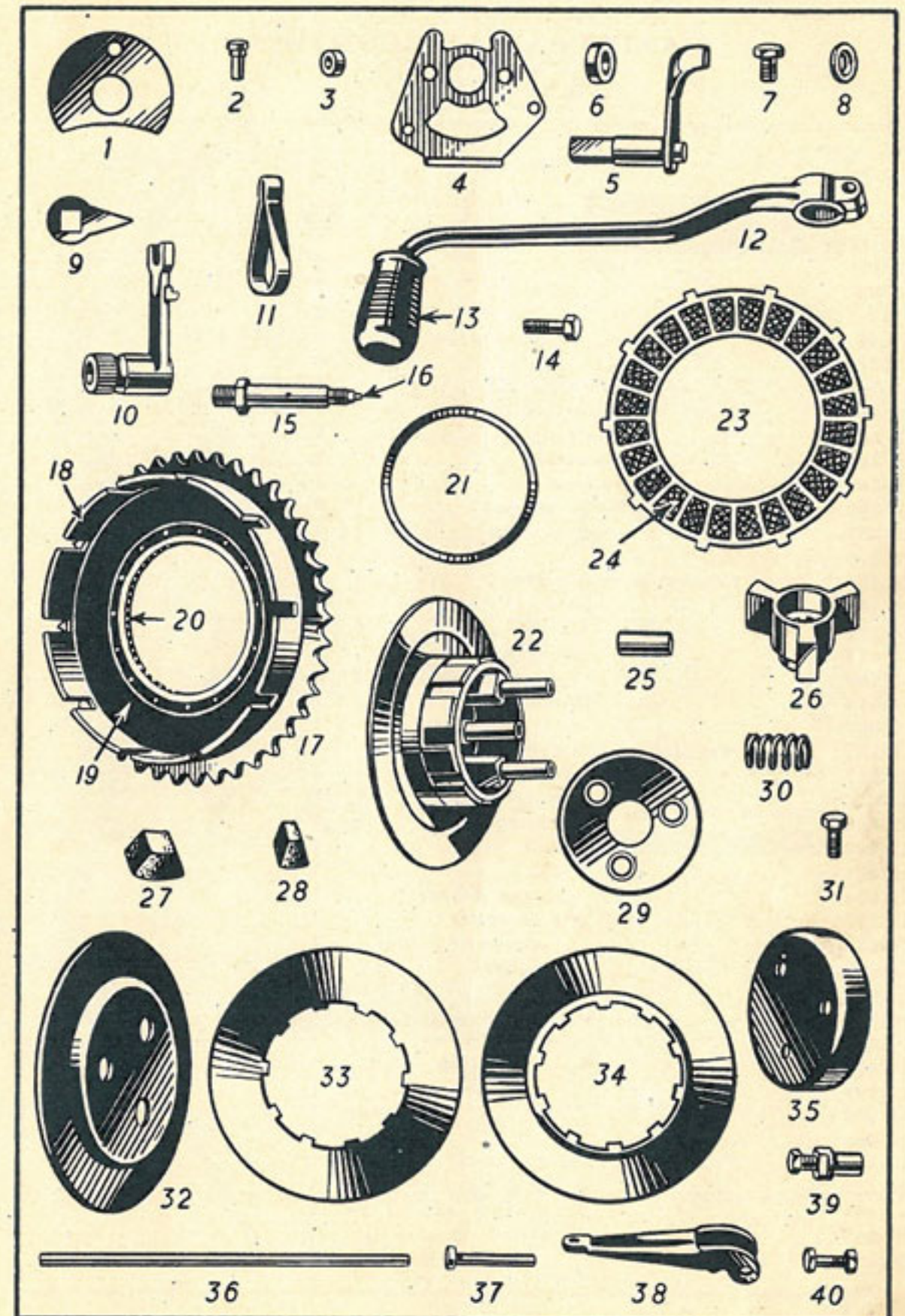
Illus. No.	No. of part.	Description.	No. per set	M.T. or Proprietary No.	£	s.	d.
1	HJ21	Footstarter sleeve	1	0	17	6
2	HJ22	" pawl	1	0	2	6
3	HJ22A	" " plunger	1	0	0	6
4	HJ23	" " " spring	1	0	0	4
5	HJ25	" " " stop plate	1	0	1	3
6	HJ26	" " " locating pin	1	0	0	3
7	HJ27	" shaft bush	1	0	4	0
8	E137	" return spring	1	0	1	3
9	E138	" " " cover	1	0	2	3
10	G42	" crank	1	0	7	6
11	G43	" " cotter pin, nut and washer	1	0	0	6
12	HJ33	Operator (inside)	1	0	5	6
13	HJ34	" fork	1	0	4	6
14	HJ36	" anchor pin	2	0	0	6
15	HJ62	" locating plunger	1	0	0	8
16	HJ63	" " " spring	1	0	0	4
17	HJ61	" " " box	1	0	1	6
18	E133	Final drive sprocket 18 T.	1	0	9	6
19	F146	" " " nut	1	0	1	6
20	H51	" " " locking screw	1	0	0	1
21	HJ53	" " " distance collar	1	0	1	0
22	HJFC/1A35	Foot control cover	1	0	12	6
23	FC57/HJ/L	" " " pin 2 1/8" long	1	0	0	4
24	FC57/HJ/S	" " " " 1/8" long	1	0	0	3
25	FC1/35	" " " ratchet (male)	1	0	4	6
26	FC4/34	" " " (female)	1	0	3	6
27	FC/44	" " " operating pin	1	0	0	6
28	FC/55	" " " operating pin bush	1	0	0	3
29	FC/51	" " " spring	1	0	0	6
30	FC/41	" " " adjuster plate	1	0	2	6
31	FC/43	" " " " pin	2	0	0	6
32	FC/58	" " " " bush	2	0	0	2
33	H113	" " " " nut	2	0	0	1
34	FC/45	" " " " spring stop	1	0	1	2



See opposite page for description and price.

FOUR-SPEED GEAR BOX (Contd.) AND CLUTCH

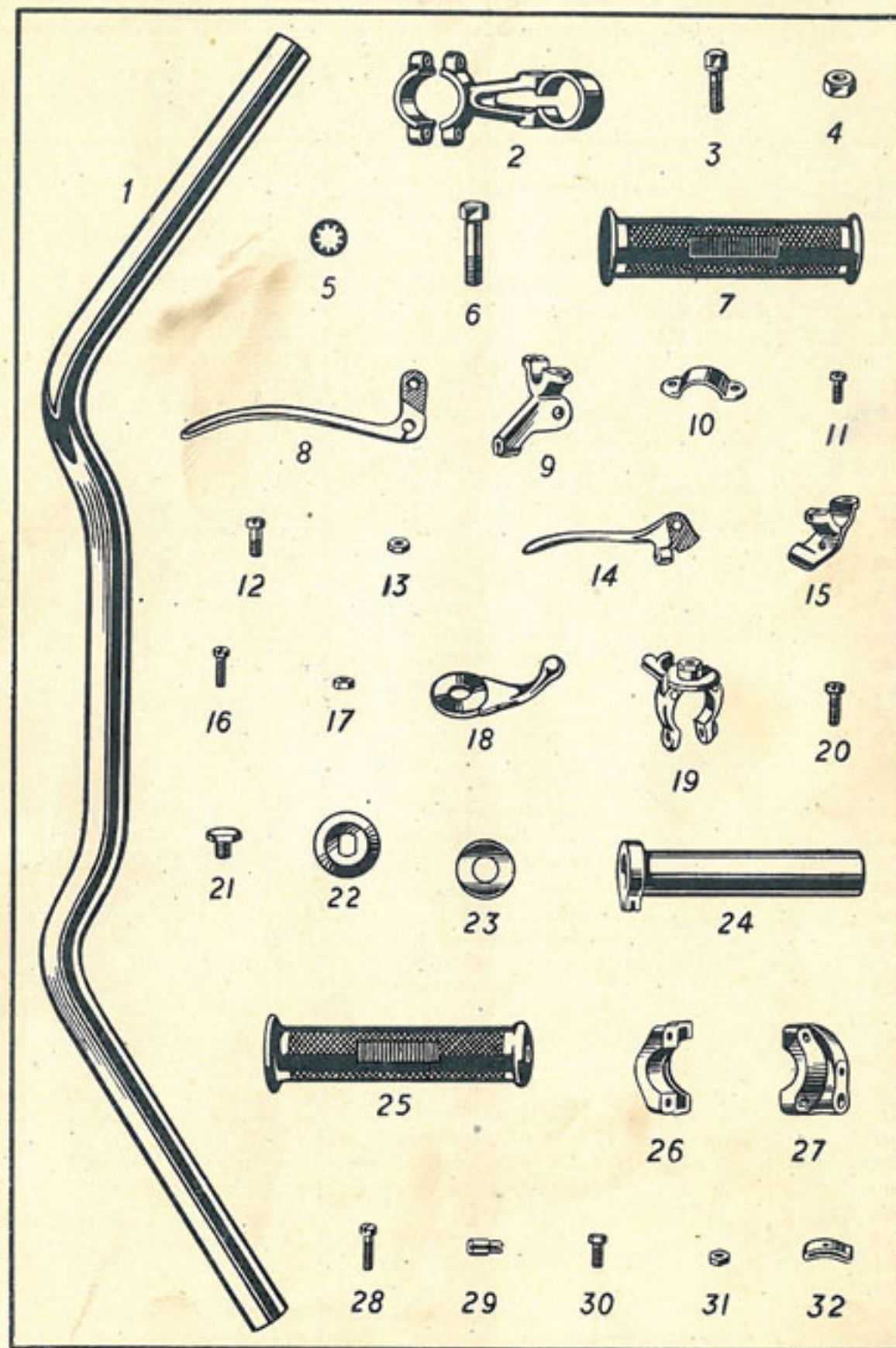
Illus. No.	No. of part.	Description.	No. per set	M.T. or Proprietary No.	£	s.	d.
1	FC/53 ..	Foot control plate ..	1	..	0	2	0
2	FC/46 ..	" " " " spring stop ..	1	..	0	0	4
3	FC/55 ..	" " " " " " bush ..	1	..	0	0	2
4	FC/42 ..	" " stop plate and spring retainer ..	1	..	0	2	6
5	FC/47 ..	" " operator shaft with lever ..	1	..	0	4	6
6	FC/50 ..	" " " " " " bush ..	1	..	0	2	0
7	FC/24 ..	" " " " " " securing pin ..	1	..	0	0	6
8	FC/7 ..	" " " " " " recessed washer ..	1	..	0	0	6
9	FC/56 ..	" " gear indicator ..	1	..	0	0	8
10	FC/48 ..	" " lever (short, inside) ..	1	..	0	4	0
11	FC/52 ..	" " return spring ..	1	..	0	1	0
12	FC/30 ..	" " " " " " " " ..	1	..	0	5	6
13	27081 ..	" " " " " " " " rubber ..	1	..	0	1	3
14	FC/30A ..	" " " " " " " " clip bolt ..	1	..	0	0	2
15	FC/49 ..	" " " " " " " " fulcrum pin ..	1	..	0	1	0
16	PZ6 ..	" " " " " " " " grease nipple ..	1	..	0	0	3
17	28105 ..	Clutch assembly ..	1	..	3	10	0
18	27535 ..	" " sprocket and drum assembly ..	1	..	2	10	0
19	H81 ..	" " drum ..	1	..	0	8	6
20	H82-FDA ..	" " ferodo disc ..	2	..	0	4	0
21	C10 ..	" " " " " " rivet, price per set ..	5	..	0	0	6
22	G74 ..	" " ball cage ..	2	..	0	3	0
23	G68/3 ..	" " " " " " ring ..	1	..	0	0	5
24	G66 ..	" " " " " " retaining rivet, price per set ..	15	..	0	0	4
25	G76 ..	" " " " " " balls, " " " " ..	54	MT7/162	0	1	3
26	G68/123 ..	" " centre drum and back plate assembly ..	1	..	1	7	6
27	H89 ..	" " plate with inserts ..	3	..	0	8	6
28	G67/F1 ..	" " " " ferodo insert, price per doz. ..	72	Not serviced	0	2	6
29	G72 ..	" " stud distance tube ..	3	..	0	0	4
30	G69 ..	" " centre ..	1	..	0	12	6
31	G70 ..	" " " " " " cush rubber (large) ..	3	..	0	1	9
32	G70A ..	" " " " " " " " (small) ..	3	..	0	1	9
33	G71 ..	" " " " " " " " retaining ring ..	1	..	0	2	9
34	G78 ..	" " spring ..	3	..	0	0	4
35	G80 ..	" " " " " " screw ..	3	..	0	0	3
36	G77 ..	" " front plate ..	1	..	0	6	0
37	G75 ..	" " intermediate plate (flat) ..	1	..	0	4	0
38	G75A ..	" " " " " " (dished) ..	2	..	0	4	0
39	G79 ..	" " cap ..	1	..	0	3	0
40	HJ66A ..	" " operating rod ..	1	..	0	0	10
41	HJ66B ..	" " " " " " pad ..	1	..	0	0	6
42	E141 ..	" " " " " " lever ..	1	..	0	2	9
43	E142 ..	" " " " " " adjusting screw and nut ..	1	..	0	0	6
44	E143 ..	" " " " " " cotter ..	1	..	0	0	4



See opposite page for description and price.

HANDLEBAR AND CONTROLS

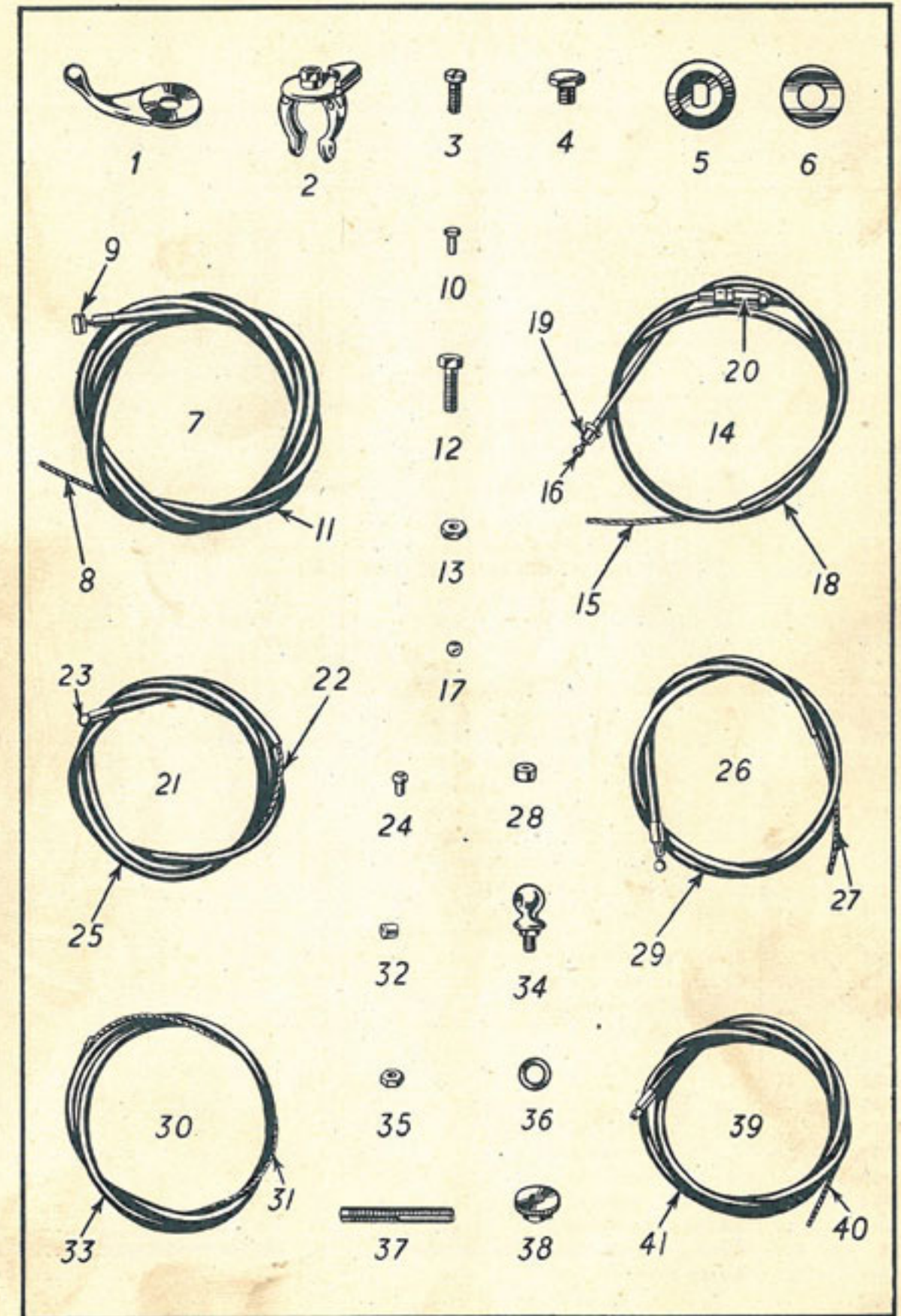
Illus. No.	No. of part.	Description.	No. per set	M.T. or Proprietary No.	£	s.	d.
1	106/320B	Handlebar bend	1		0	18	0
2	27408	" lug	2		0	6	0
3	28290	" " 3/8" pin	2		0	0	3
4	8712	" " 3/8" nut	2		0	0	2
5	27918	" " 3/8" Shakeproof washer	2	MT5/9724	0	0	1
6	15632	" " 5/16" pin	4		0	0	2
7	16/069	" dummy grip	1		0	1	9
	18/455	Clutch lever complete	1		0	7	0
8	18/130	" " only	1		0	4	0
9	18/234	" " bracket	1		0	4	0
10	12/040	" " clamp	1		0	0	8
11	18/300	" " screw	2		0	0	4
12	18/087	" " fulcrum pin	1		0	0	4
13	18/053	" " " nut	1		0	0	4
	18/453	Exhaust lever complete	1		0	4	0
14	18/162	" " only	1		0	1	9
15	18/161	" " bracket	1		0	1	6
	12/040	" " clamp (as illus. 10)	1		0	0	8
	18/300	" " screw (as illus. 11)	2		0	0	4
16	11/014	" " fulcrum pin	1		0	0	4
17	18/060	" " " nut	1		0	0	4
	12/131	Magneto control complete	1		0	7	0
18	12/017	" " lever only	1		0	3	0
19	28067	" " body and clips	1		0	4	0
20	12/022	" " clip screw	1		0	0	4
21	12/029	" " bolt	1		0	0	4
22	12/031	" " cap	1		0	0	6
23	12/033	" " spring washer	1		0	0	2
	16/117	Throttle twist grip complete	1		0	8	6
24	16/014-54	" " sleeve and rotor	1		0	4	0
25	16/070	" " " rubber	1		0	1	3
26	16/060	" " " body, top half	1		0	3	9
27	16/061	" " " " bottom half	1		0	3	9
28	11/013	" " " screw	1		0	0	4
29	16/011	" " " cable stop	1		0	0	6
30	16/009	" " " fulcrum screw	1		0	0	6
31	16/010	" " " " nut	1		0	0	2
32	16/008	" " " " spring	1		0	0	8
	18/455	Front brake lever complete	1		0	7	0
	18/130	" " " only (as illus. 8)	1		0	4	0
	18/234	" " " bracket (as illus. 9)	1		0	4	0
	12/040	" " " clamp (as illus. 10)	1		0	0	8
	18/300	" " " screw (as illus. 11)	2		0	0	4
	18/087	" " " fulcrum pin (as illus. 12)	1		0	0	4
	18/053	" " " fulcrum pin nut (as illus. 13)	1		0	0	4



See opposite page for description and price.

HANDLEBAR AND CONTROLS—Contd.

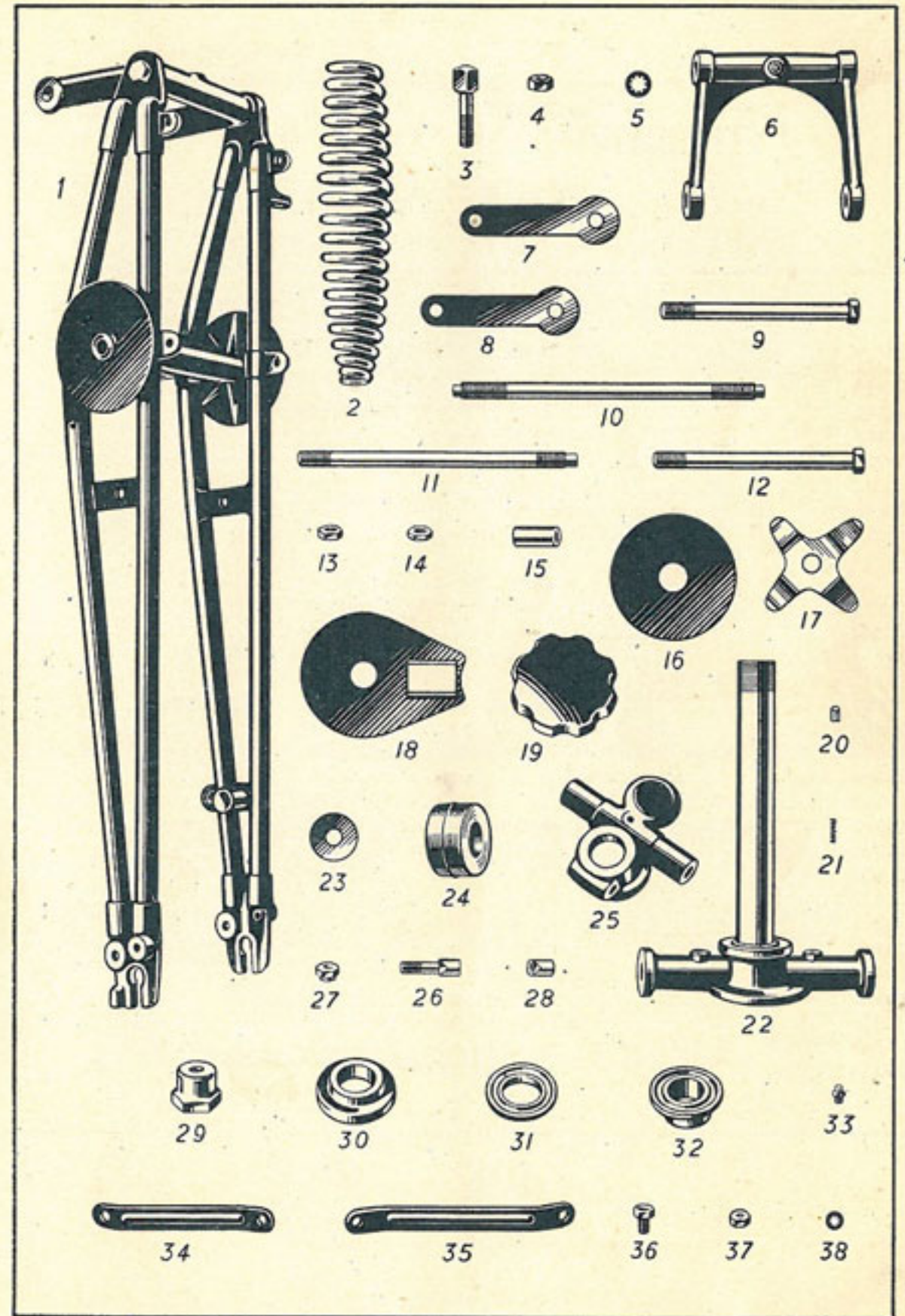
Illus. No.	No. of part.	Description.	No. per set	M.T. or Proprietary No.	£	s.	d.
	12/121	Air lever complete	1		0	7	0
1	12/016	" " only	1		0	3	0
2	28068	" " body and clips	1		0	4	0
3	12/022	" " clip screw	1		0	0	4
4	12/029	" " control bolt	1		0	0	4
5	12/031	" " cap	1		0	0	6
6	12/033	" " spring washer	1		0	0	2
7	28943	Clutch cable assembly	1		0	5	0
8	28944	" " "	1		0	1	0
9	18/107A	" " nipple, lever end	1		0	0	4
10	27017	" " gearbox end	1		0	0	1
11	28050	" " casing	52"	MT1/BN/B2	0	1	0
12	9283	" " adjusting screw	1		0	0	6
13	27000	" " locknut	1		0	0	1
14	28187	Exhaust lifter cable assembly	1		0	5	0
15	28051	" " "	1		0	1	0
16	18/115	" " nipple, lever end	1		0	0	4
17	21800	" " engine end	1		0	0	2
18	28052	" " casing, long	31"	MT1/BN/PN/B1	0	1	0
	28052A	" " casing, short	6"	MT1/BN/PN/B1	0	0	3
19	22786	" " thimble	1		0	0	2
20	27322	" " adjuster complete	1		0	1	0
	3793	" " screw	1		0	0	4
	3794	" " body	1		0	0	6
	3792	" " nut	1		0	0	2
21	28188	Magneto cable assembly	1		0	2	9
22	28053	" " "	1		0	1	0
23	12/034	" " nipple, lever end	1		0	0	2
24	463952	" " magneto end	1		0	0	2
25	28054	" " casing	32"	MT1/BN/PN/B1	0	1	0
26	28189	Throttle cable assembly	1		0	2	6
27	28055	" " "	1		0	0	6
	12/034	" " nipple, lever end (as illus. 23)	1		0	0	2
28	1482	" " carburettor end	1		0	0	2
29	28056	" " casing	39"	MT1/BN/PN/B1	0	0	6
30	28945	Front brake cable assembly	1		0	4	6
31	28946	" " "	1		0	0	6
	18/107A	" " nipple, lever end (as illus. 9)	1		0	0	4
		" " brake end	1		0	0	1
32	13747	" " casing	31"	MT1/BN/PN/B1	0	1	0
33	28058	" " stop	1		0	0	6
34	25305	" " nut	1		0	0	1
35	26998	" " washer	1		0	0	1
36	8134	" " adjusting screw	1		0	0	8
37	14981	" " locknut	1		0	0	8
38	14980	" " "	1		0	0	8
39	28191	Air cable assembly	1		0	2	6
40	28059	" " "	1		0	0	6
	12/034	" " nipple, lever end (as illus. 23)	1		0	0	2
	1482	" " carb. " (" " 28)	1		0	0	2
41	28060	" " casing	32"	MT1/BN/PN/B1	0	1	0
	7669	Ferrule for cable casing (large)	2	MT1/BN/PN/991/3	0	0	1
	5173	" " (small)	10	MT1/BN/PN/979	0	0	1



See opposite page for description and price.

FRONT FORK

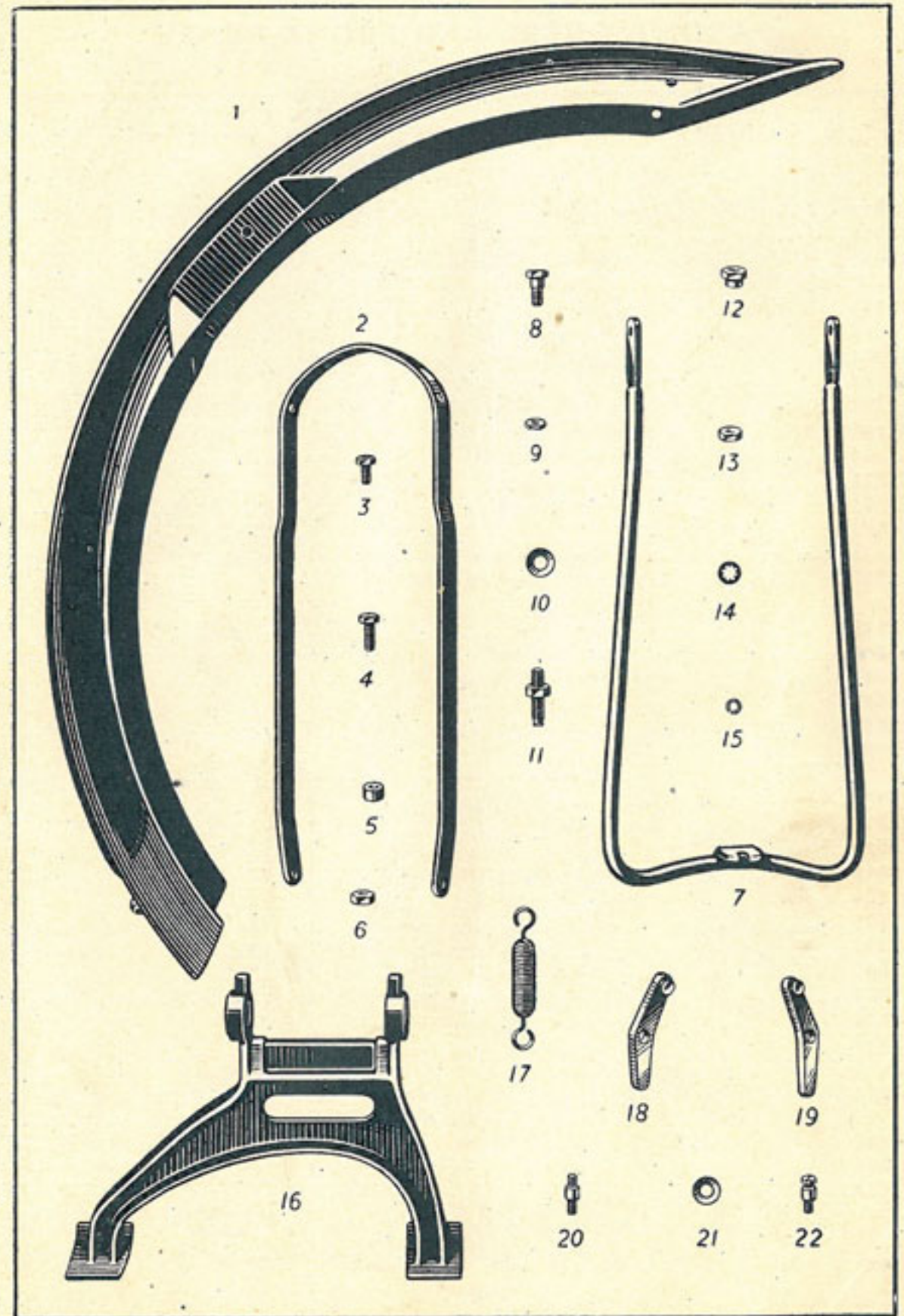
Illus. No.	No. of part.	Description.	No. per set	M.T. or Proprietary No.	£	s.	d.
	28370 ..	Front fork assembly (fully brazed) with steering damper ..	1		6	4	0
1	28203 ..	Front fork girder (fully brazed) ..	1		3	10	0
2	20745 ..	Spring ..	1		0	5	6
3	28761 ..	" pin ..	1		0	0	3
4	26995 ..	" " 1/2" nut ..	1		0	0	2
5	27918 ..	" " 1/2" Shakeproof washer ..	1	MT5/9724	0	0	1
6	26734 ..	Top link with bushes ..	1		0	7	6
7	19120 ..	Bottom link (R.H. thread) ..	1		0	3	6
8	19121 ..	" " (L.H. thread) ..	1		0	3	6
9	28708 ..	Swivel pin (top) ..	1		0	1	0
10	26766 ..	" " (bottom) ..	1		0	1	0
11	26764 ..	" " (crown) ..	1		0	1	6
12	26763 ..	" " (ball head clip) ..	1		0	1	0
13	7732 ..	" " nut (R.H. thread, 1/4" thick) ..	3		0	0	2
	7733 ..	" " " (L.H. " " " " " ") ..	2		0	0	2
14	26078 ..	" " " (R.H. " " " " " ") ..	1		0	0	2
	26079 ..	" " " (L.H. " " " " " ") ..	1		0	0	2
15	26744 ..	" " bush ..	8		0	0	6
16	26770 ..	Shock absorber friction disc ..	2		0	0	3
17	26052 ..	" " spring ..	2		0	1	3
18	26769 ..	" " anchor plate ..	2		0	0	9
19	26048 ..	" " adjusting knob (R.H. thread) ..	1		0	2	0
	26049 ..	" " adjusting knob (L.H. thread) ..	1		0	2	0
20	22900 ..	" " adjusting knob plunger ..	2		0	0	2
21	26196 ..	" " adjusting knob plunger spring ..	2		0	0	1
22	27331 ..	Steering stem and crown with bushes ..	1		0	17	6
23	19122 ..	Crown distance washer ..	2		0	0	2
24	20632 ..	" rubber buffer ..	2		0	0	8
25	27247 ..	Ball head clip ..	1		0	12	6
26	26745 ..	" " bolt ..	1		0	0	3
27	26168 ..	" " " nut ..	1		0	0	2
28	26746 ..	" " " sleeve ..	1		0	0	2
29	15436 ..	" " locknut ..	1		0	1	0
30	27248 ..	" " race (head clip) ..	1		0	1	6
31	27249 ..	" " (crown) ..	1		0	1	0
32	26454 ..	" " (frame) ..	2		0	1	6
	1/2" dia.	Balls, price per doz. ..	38	MT7/165	0	0	2
33	PZ6	Grease nipple (straight) ..	6	MT1/TT/P6/1/4" B.S.F.	0	0	3
34	27069 ..	Lamp bracket (top) ..	2		0	0	6
35	25003 ..	" " (bottom) ..	2		0	0	6
36	251 ..	" " 1/4" pin, 1/2" long ..	4		0	0	2
37	26998 ..	" " nut ..	4		0	0	1
38	27916 ..	" " Shakeproof washer ..	4	MT5/24861	0	0	1



See opposite page for description and price.

FRONT MUDGUARD, FRONT STAND AND CENTRAL STAND

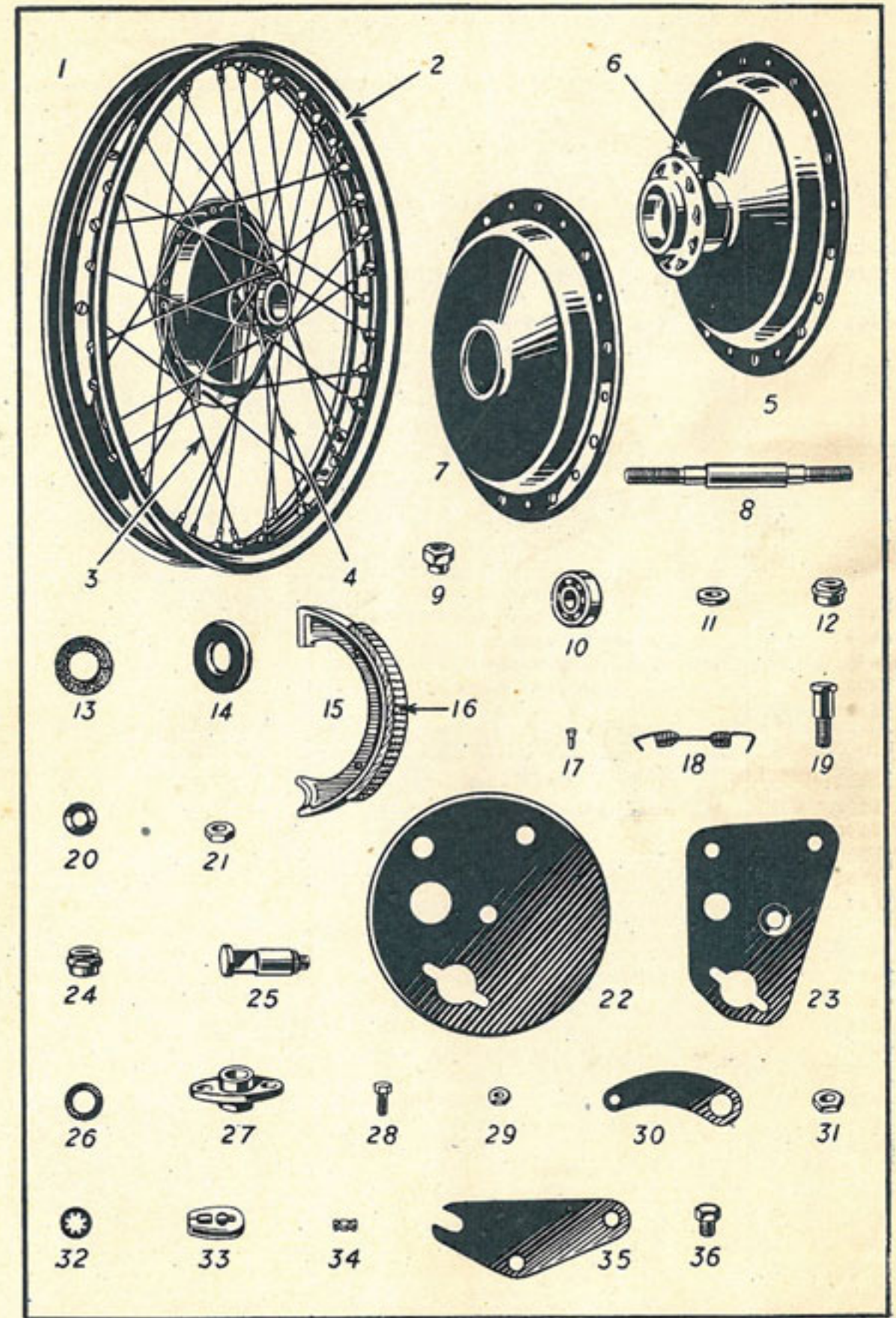
Illus. No.	No. of part.	Description.	No. per set	M.T. or Proprietary No.	£	s.	d.
1	27461 ..	Front mudguard only	1	0	13	9
2	28084 ..	" " stay	1	0	1	6
3	251 ..	" " " $\frac{1}{4}$ " pin, $\frac{1}{2}$ " long	5	0	0	2
4	252 ..	" " " " " $\frac{1}{4}$ " "	1	0	0	2
5	14791 ..	" " " " " distance piece	1	0	0	2
6	26998 ..	" " " " " $\frac{1}{2}$ " nut	2	0	0	1
7	27460 ..	stand	1	0	7	6
8	20192 ..	" " pivot pin	2	0	0	2
9	15771 ..	" " " " locknut	2	0	0	2
10	15641 ..	" " " " washer	2	0	0	1
11	21914 ..	" " clip stud	1	0	0	6
12	6148 ..	" " " " $\frac{5}{16}$ " shouldered nut	1	0	0	2
13	27001 ..	" " " " $\frac{3}{8}$ " locknut	1	0	0	2
14	27917 ..	" " " " $\frac{1}{16}$ " Shakeproof washer	1	MT5/15414	0	0	1
15	6198 ..	" " " " split ring	1	0	0	1
16	27198 ..	Central stand	1	0	10	6
17	25578 ..	" " spring	2	0	0	9
18	27342 ..	" " " catch with stud (R.H.)	1	0	0	9
19	27343 ..	" " " catch with stud (L.H.)	1	0	0	9
20	27274 ..	" " " catch pivot	2	0	0	2
21	5916 ..	" " " $\frac{1}{2}$ " locknut (as illus. 6)	4	0	0	1
22	27051 ..	" " " spring catch pivot	2	0	0	1
	26998 ..	" " " $\frac{1}{2}$ " washer	2	0	0	1
	27051 ..	" " " spring post	2	0	0	1
	26998 ..	" " " $\frac{1}{2}$ " nut (as illus. 6)	2	0	0	1



See opposite page for description and price.

FRONT WHEEL AND FRONT BRAKE

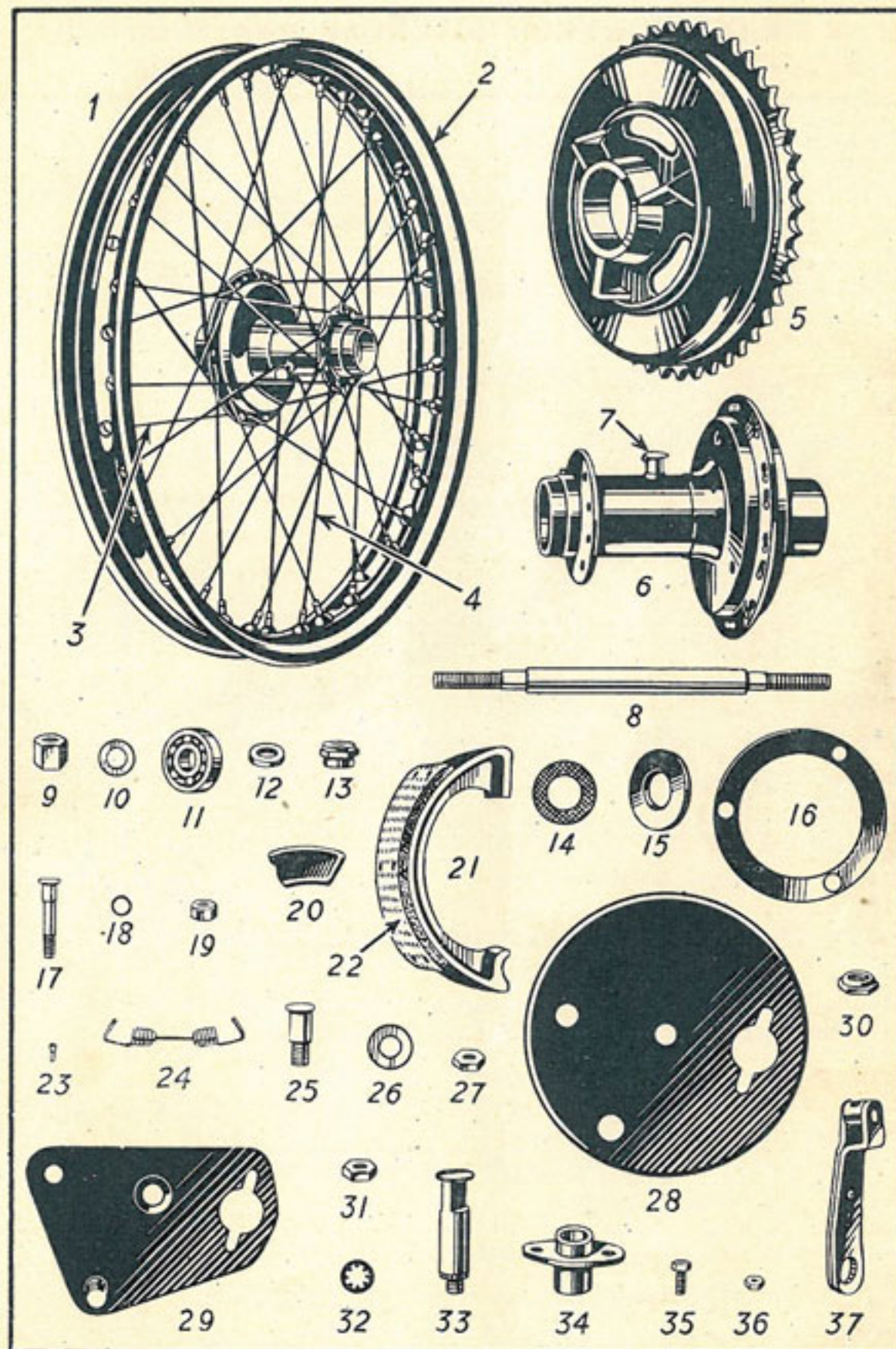
Illus. No.	No. of part.	Description.	No. per set	M.T. or Proprietary No.	£	s.	d.
1	28372 ..	Front wheel with hub brake, less tyre	1	4	0	0
2	15954 ..	" " rim	1	0	11	0
3	28658 ..	" " spokes 7 $\frac{1}{2}$ " long, price per set	20	0	2	0
4	28659 ..	" " spokes 8 $\frac{1}{2}$ " long, price per set	20	0	2	0
	16021 ..	" " spoke nipples, price per set	40	0	1	9
5	28718 ..	hub with lubricator	1	0	12	6
6	27332 ..	" " lubricator	1	MT1/17308	0	0	4
7	27190 ..	" " brake drum	1	Not serviced	0	9	0
8	11940 ..	" " spindle	1	0	2	9
9	28070 ..	" " nut	2	0	0	6
10	16562 ..	" " journal bearing	2	MT7/6063	0	9	3
11	11936 ..	" " distance washer	1	0	0	1
12	11937 ..	" " journal bearing retaining nut	1	0	0	3
13	9838 ..	" " oil retainer	2	0	0	2
14	21930 ..	" " dust excluder	1	0	0	4
15	27449A ..	brake shoe with lining (R.H.)	1	0	5	0
	27449B ..	" " " " (L.H.)	1	0	5	0
16	26835 ..	" " lining (each)	2	0	2	0
17	9526 ..	" " rivet, price per doz.	12	0	0	6
18	27347 ..	" " return spring	2	0	0	6
19	27276 ..	" " pin	1	0	0	3
20	20018 ..	" " distance washer	1	0	0	1
21	10314 ..	" " $\frac{7}{16}$ " locknut	1	0	0	2
22	28124 ..	" " cover plate	1	0	2	0
23	28125 ..	" " torque	1	0	2	6
24	28127 ..	" " distance piece	1	0	0	4
25	27067 ..	" " operating cam	1	0	2	6
26	27407 ..	" " washer	1	0	0	2
27	28126 ..	" " bush	1	0	2	0
28	26309 ..	" " " " $\frac{1}{2}$ " pin	2	0	0	2
29	7916 ..	" " bush $\frac{1}{2}$ " pin nut	2	0	0	1
30	27346 ..	" " lever	1	0	0	9
31	10314 ..	" " $\frac{7}{16}$ " nut	1	0	0	2
32	27919 ..	" " $\frac{7}{16}$ " Shakeproof washer	1	MT5/9705	0	0	1
33	13745 ..	" " lever knuckle	1	0	0	3
34	13746 ..	" " connec- tion pin	1	0	0	1
35	27275 ..	" " anchor plate	1	0	0	9
36	28856 ..	" " $\frac{7}{16}$ " pin	1	0	0	2
37	27919 ..	" " Shakeproof washer (as illus. 32).	1	MT5/9705	0	0	1



See opposite page for description and price.

REAR WHEEL AND REAR BRAKE

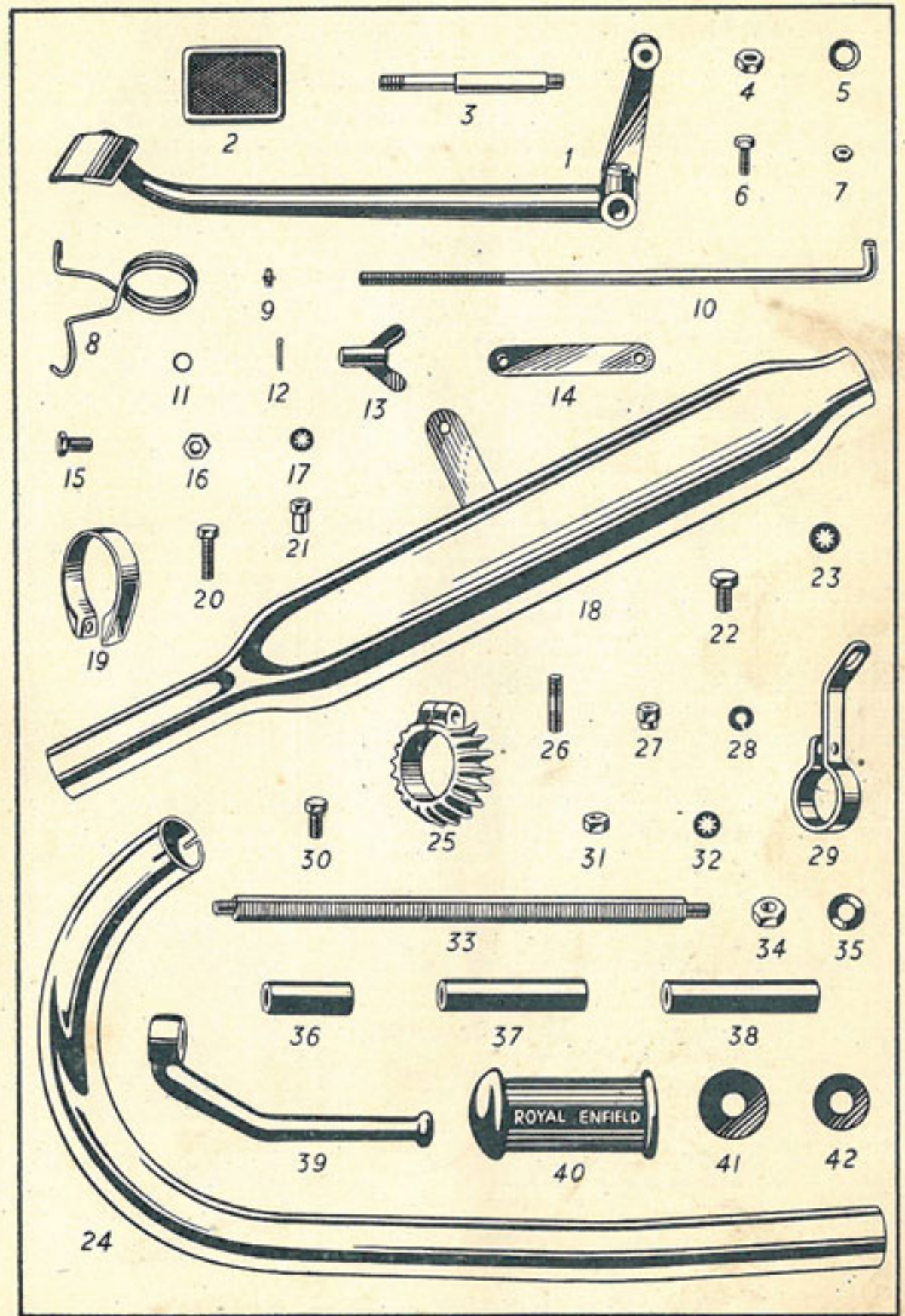
Illus. No.	No. of part.	Description.	No. per set	M.T. or Proprietary No.	£	s.	d.
1	28373 ..	Rear wheel with cush drive and brake (less tyre)	1		5	10	0
2	15954 ..	" " rim	1		0	11	0
3	28660 ..	" " spokes, 8" long, price per set	20		0	2	0
4	28661 ..	" " " 8½" long, price per set	20		0	2	0
	16021 ..	" " spkoe nipples, set of 40	40		0	1	9
5	27155 ..	" hub brake drum and sprocket	1		1	0	0
6	28717 ..	" " with lubricator	1		0	15	0
7	27332 ..	" " lubricator	1	MT1/17308	0	0	4
8	27153 ..	" " spindle	1		0	3	6
9	10512 ..	" " " nut	2		0	0	6
10	5025 ..	" " " washer	2	MT5/9730	0	0	1
11	16562 ..	" " journal bearing	2	MT7/6063	0	9	3
12	11936 ..	" " " distance washer	1		0	0	1
13	11937 ..	" " journal bearing retaining nut	1		0	0	3
14	9838 ..	" " oil retainer	2		0	0	2
15	21930 ..	" " dust excluder	1		0	0	4
16	16623 ..	" " cush drive lockring	1		0	1	3
17	27156 ..	" " " " stud	3		0	0	6
18	14691 ..	" " " " " 5/16" washer	3		0	0	1
19	26158 ..	" " " " " 5/16" nut	3		0	0	3
20	10467 ..	" " " " " rubber block	6		0	0	6
21	27690A ..	" brake shoe with lining (R.H.)	1		0	5	0
	27690B ..	" " " " (L.H.)	1		0	5	0
22	26835 ..	" " " lining (each)	2		0	2	0
23	9526 ..	" " " rivet (per dz.)	12		0	0	6
24	27691 ..	" " " return spring (aluminium shoe)	2		0	0	6
25	27066 ..	" " " pin	1		0	0	4
26	20018 ..	" " " distance washer	1		0	0	1
27	3570 ..	" " " 7/16" lockout	1		0	0	2
28	27976 ..	" " cover plate	1		0	2	0
29	27977 ..	" " torque plate with anchor stud	1		0	3	0
30	27978 ..	" " " distance piece	1		0	0	4
31	10314 ..	" " anchor stud nut	1		0	0	3
32	27919 ..	" " " 7/16" Shakeproof washer	1	MT5/9705	0	0	1
33	27086 ..	" " operating cam	1		0	2	6
34	27980 ..	" " " bush	1		0	2	0
35	26309 ..	" " " " 1/4" pin	2		0	0	2
36	7916 ..	" " " " " nut	2		0	0	1
37	27684 ..	" " " lever	1		0	1	6
	10314 ..	" " " " 7/16" nut (as illus. 31)	1		0	0	2
	27919 ..	" " " " 7/16" Shakeproof washer (as illus. 32)	1	MT5/9705	0	0	1



See opposite page for description and price.

REAR BRAKE CONTROL, SILENCER AND FOOTRESTS

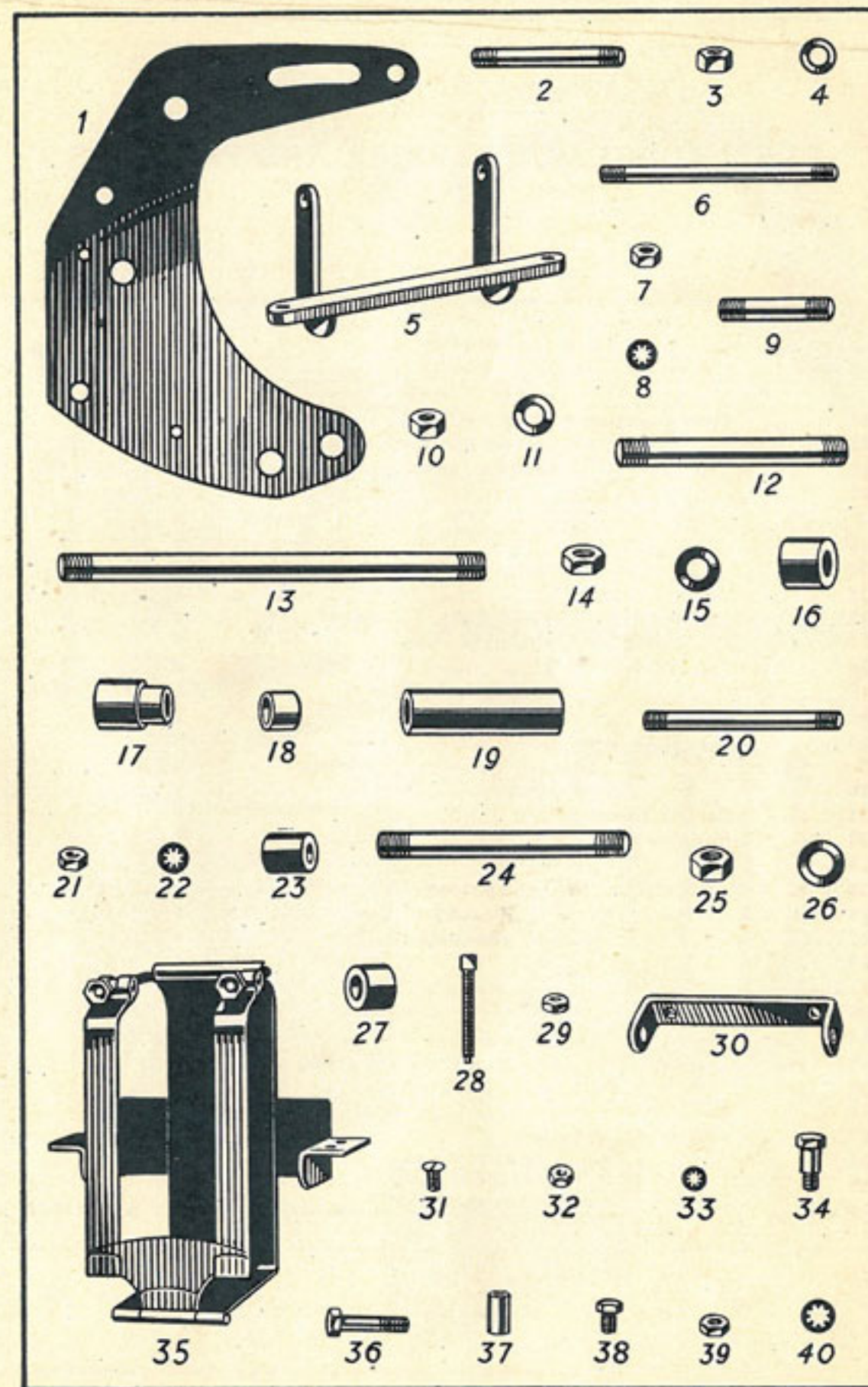
Illus. No.	No. of part.	Description.	No. per set	M.T. or Proprietary No.	£	s.	d.
1	25837	Rear brake foot pedal	1		0	5	6
2	25894	" " " " rubber pad	1		0	1	0
3	25973	" " " " fulcrum stud	1		0	1	0
4	26995	" " " " " " nut	2		0	0	2
5	15641	" " " " fulcrum stud	2		0	0	1
6	252	" " " " 1/2" stop pin	1		0	0	2
7	27000	" " " " " " locknut	1		0	0	1
8	26348	" " " " return spring	1		0	0	6
9	PZ6	" " " " grease nipple	1	MT1/TT/P6/1/4" B.S.F.	0	0	3
10	28449	" " " " operating rod	1		0	0	9
11	14691	" " " " 1/16" washer	1		0	0	1
12	3/8" x 1/16"	" " " " split pin	1	MT1/5654	0	0	1
13	17691	" " " " adjusting nut	1		0	0	6
14	27168	" " " " anchor link	1		0	0	9
15	27268	" " " " pin (frame)	1		0	0	2
16	26995	" " " " " " nut	1		0	0	2
17	27918	" " " " " " 1/2" Shakeproof washer	1	MT5/9724	0	0	1
18	27358	Silencer	1		1	12	6
19	12882	" " clip	1		0	1	0
20	4860	" " pin	1		0	0	2
21	12881	" " nut	1		0	0	3
22	10931	" " attachment pin	1		0	0	2
23	27918	" " " " 1/2" Shakeproof washer	1	MT5/9724	0	0	1
24	27341	Exhaust pipe	1		0	17	6
25	26281	" " clip (top)	1		0	2	6
26	22550	" " " " stud	1		0	0	2
27	7216	" " " " nut	1		0	0	2
28	1/16" dia.	" " " " spring washer	1		0	0	1
29	28713	" " " " (footrests)	1		0	1	6
30	7201	" " " " 1/2" pin 3/16" long	1		0	0	2
31	26998	" " " " nut	1		0	0	1
32	27916	" " " " Shakeproof washer	1	MT5/24861	0	0	1
33	23392	Footrest support bar	1		0	1	0
34	10315	" " " " nut	2		0	0	2
35	6740	" " " " washer	2		0	0	1
36	27366	" " " " tube 2 1/16" long	1		0	0	9
37	15750	" " " " 3 1/2" "	1		0	0	9
38	22723	" " " " 3 3/16" "	1		0	0	9
39	25839	" " arm	2		0	2	6
40	25838	" " rubber	2		0	1	6
41	22697	" " distance washer (large)	1		0	0	2
42	22684	" " " " (small)	1		0	0	2



See opposite page for description and price.

FRAME, ENGINE ATTACHMENT STUDS
AND BATTERY CARRIER

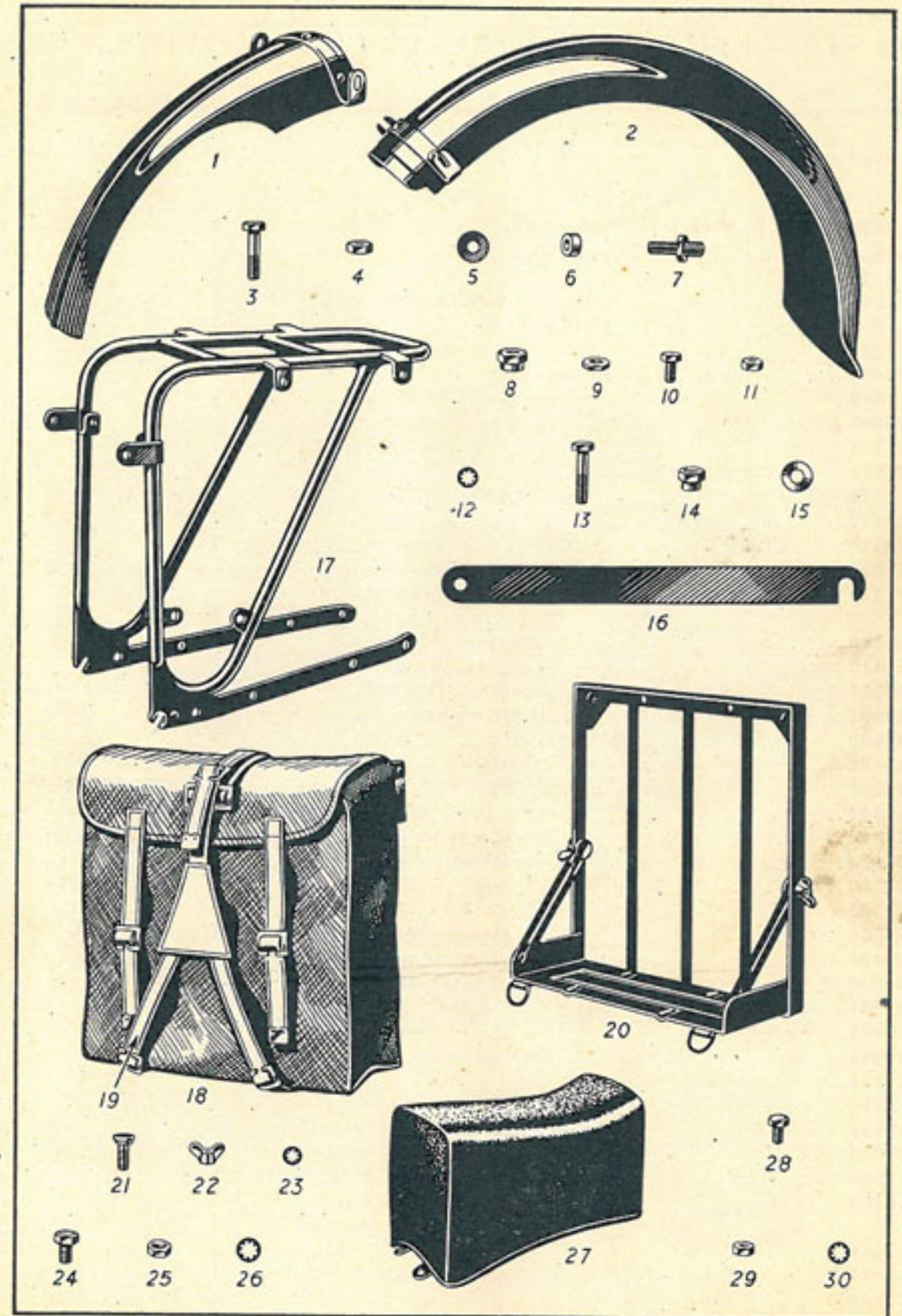
Illus. No.	No. of part.	Description.	No. per set	M.T. or Proprietary No.	£	s.	d.
	28947 ..	Frame assembly less loose fittings, comprising Frame front 28309, Frame rear portion (R.H.) 28319 and (L.H.) 28320, connecting bolts, nuts and head races (pressed in) ..	1		9	0	0
	28309 ..	Frame, front portion only ..	1		5	0	0
	28319 ..	rear portion (R.H.) ..	1		2	15	0
	28320 ..	" (L.H.) ..	1		2	17	6
1	27145 ..	engine plate ..	2		0	4	0
2	9429 ..	backstay stud, $\frac{7}{16}$ " dia. ..	1		0	0	3
3	1898 ..	" nut ..	2		0	0	3
4	1846 ..	" washer ..	2		0	0	1
5	20121 ..	hanger for battery and toolbox ..	1		0	2	6
6	10264 ..	" and backstay bridge stud, $\frac{1}{2}$ " dia. ..	1		0	0	3
7	26995 ..	" and backstay bridge stud nut ..	2		0	0	2
8	27918 ..	" and backstay bridge stud $\frac{3}{8}$ " Shakeproof washer ..	2	MT5/9724	0	0	1
9	22686 ..	stud, $\frac{1}{2}$ " dia., $2\frac{1}{2}$ " long, for cradle tubes ..	1		0	0	6
10	402 ..	stud $\frac{1}{2}$ " nut ..	2		0	0	3
11	7914 ..	" washer ..	2		0	0	1
12	25958 ..	" (rear, top, $\frac{5}{8}$ " dia.) ..	1		0	0	6
13	22687 ..	" (bottom, $\frac{5}{8}$ " dia.) ..	1		0	0	9
14	8350 ..	" nut ..	4		0	0	3
15	8351 ..	" washer ..	4		0	0	1
16	25962 ..	" distance piece, $1\frac{1}{2}$ " dia., 1" long ..	1		0	0	4
17	27147 ..	" distance piece, $1\frac{1}{2}$ " long ..	1		0	0	6
18	27148 ..	" distance piece, $1\frac{1}{2}$ " long ..	1		0	0	4
19	25363 ..	" tube $3\frac{1}{2}$ " long ..	1		0	1	0
20	8804 ..	Engine attachment stud $\frac{3}{8}$ " dia., $4\frac{1}{2}$ " long ..	2		0	0	3
21	26995 ..	" nut ..	4		0	0	1
22	27918 ..	" Shakeproof washer ..	4	MT5/9724	0	0	1
23	25331 ..	" distance piece, 1" long ..	2		0	0	6
24	28399 ..	lug stud (front) $\frac{9}{16}$ " dia., $5\frac{3}{8}$ " long ..	1		0	0	6
25	20198 ..	" nut ..	2		0	0	3
26	8426 ..	" washer ..	2		0	0	1
27	23900 ..	" distance piece, $\frac{3}{4}$ " long ..	1		0	0	8
28	7819 ..	Chain adjuster screw ..	2		0	0	4
29	26998 ..	" lock nut ..	2		0	0	1
30	23446 ..	Bracket for voltage control box ..	1		0	0	6
31	9795 ..	" screw ..	2		0	0	2
32	26998 ..	" nut ..	2		0	0	1
33	27916 ..	" Shakeproof washer ..	2	MT5/9724	0	0	1
34	22894 ..	Stop for front fork ..	2		0	0	6
35	27340 ..	Battery carrier complete ..	1		0	15	0
36	SE300 ..	" attachment pin (long) ..	1		0	0	3
37	27298 ..	" distance piece ..	1		0	0	3
38	14445 ..	" attachment pin (short) ..	2		0	0	2
39	27001 ..	" nut ..	2		0	0	1
40	27917 ..	" $\frac{5}{16}$ " Shakeproof washer ..	2	MT5/15414	0	0	1



See opposite page for description and price.

REAR MUDGUARD, CARRIER AND PANNIERS

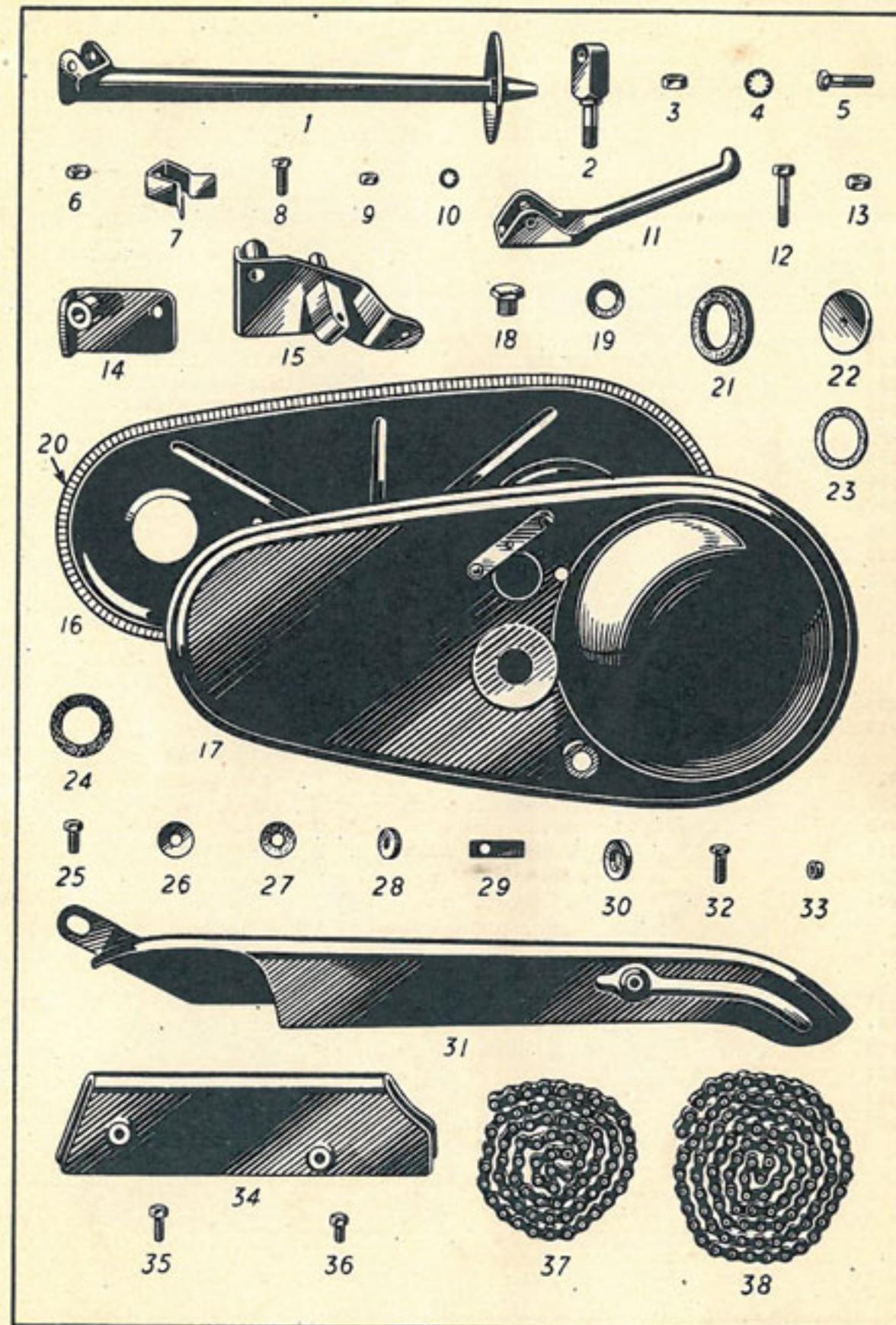
Illus. No.	No. of part.	Description.	No. per set	M.T. or Proprietary No.	£	s.	d.
1	27291 ..	Rear mudguard (fixed half) with strap ..	1	..	0	7	6
2	28439 ..	" " (detachable half) with strap ..	1	..	0	7	6
3	24876 ..	" " backstay strap pin (fixed half) ..	2	..	0	0	2
4	27001 ..	" " " " " " 1/8" nut ..	2	..	0	0	1
5	F193 ..	" " " " " " washer ..	2	..	0	0	1
6	14826 ..	" " " " " " packing collar ..	2	..	0	0	1
7	23143 ..	" " " " " " stud (bottom) ..	2	..	0	0	6
8	6148 ..	" " " " " " nut ..	2	..	0	0	2
9	7345 ..	" " " " " " locknut ..	2	..	0	0	2
10	251 ..	" " " " " " 1/2" pin, 1/2" long ..	6	..	0	0	2
11	26998 ..	" " " " " " 1/2" nut ..	6	..	0	0	1
12	27916 ..	" " " " " " 1/2" Shakeproof washer ..	6	MT5/24861	0	0	1
13	25059 ..	" " " " " " 1/8" backstay bolt ..	2	..	0	0	2
14	6148 ..	" " " " " " nut ..	2	..	0	0	2
15	F193 ..	" " " " " " washer ..	2	..	0	0	1
16	28450 ..	" " " " " " strut ..	2	..	0	0	9
17	28451 ..	Carrier complete ..	1	..	1	5	0
18	28923 ..	Pannier bag (L.H.) ..	1	..	1	5	0
	28924 ..	" " (R.H.) ..	1	..	1	5	0
	28925 ..	" " "Y" strap, long ..	1	..	0	1	0
19	28926 ..	" " " " " short ..	1	..	0	1	0
20	28927 ..	" " support complete (R.H.) ..	1	..	1	1	0
	28928 ..	" " " " " (L.H.) ..	1	..	1	1	0
21	28921 ..	" " " " " stay pin ..	2	..	0	0	4
22	28922 ..	" " " " " wingnut ..	2	..	0	0	6
23	27918 ..	" " " " " washer ..	2	..	0	0	1
24	10218 ..	" " " " " pin 1/2" dia., 3/16" long ..	8	..	0	0	2
25	26998 ..	" " " " " 1/2" nut ..	8	..	0	0	1
26	27916 ..	" " " " " Shakeproof washer ..	6	..	0	0	1
27	28763 ..	Pillion seat complete ..	1	..	0	18	0
28	251 ..	" " " " " pin 1/2" dia., 1/2" long ..	4	..	0	0	2
29	26998 ..	" " " " " nut ..	4	..	0	0	1
30	27916 ..	" " " " " Shakeproof washer ..	4	MT5/24861	0	0	1



See opposite page for description and price.

PROP STAND, PILLION FOOTRESTS, CHAIN COVERS & CHAINS

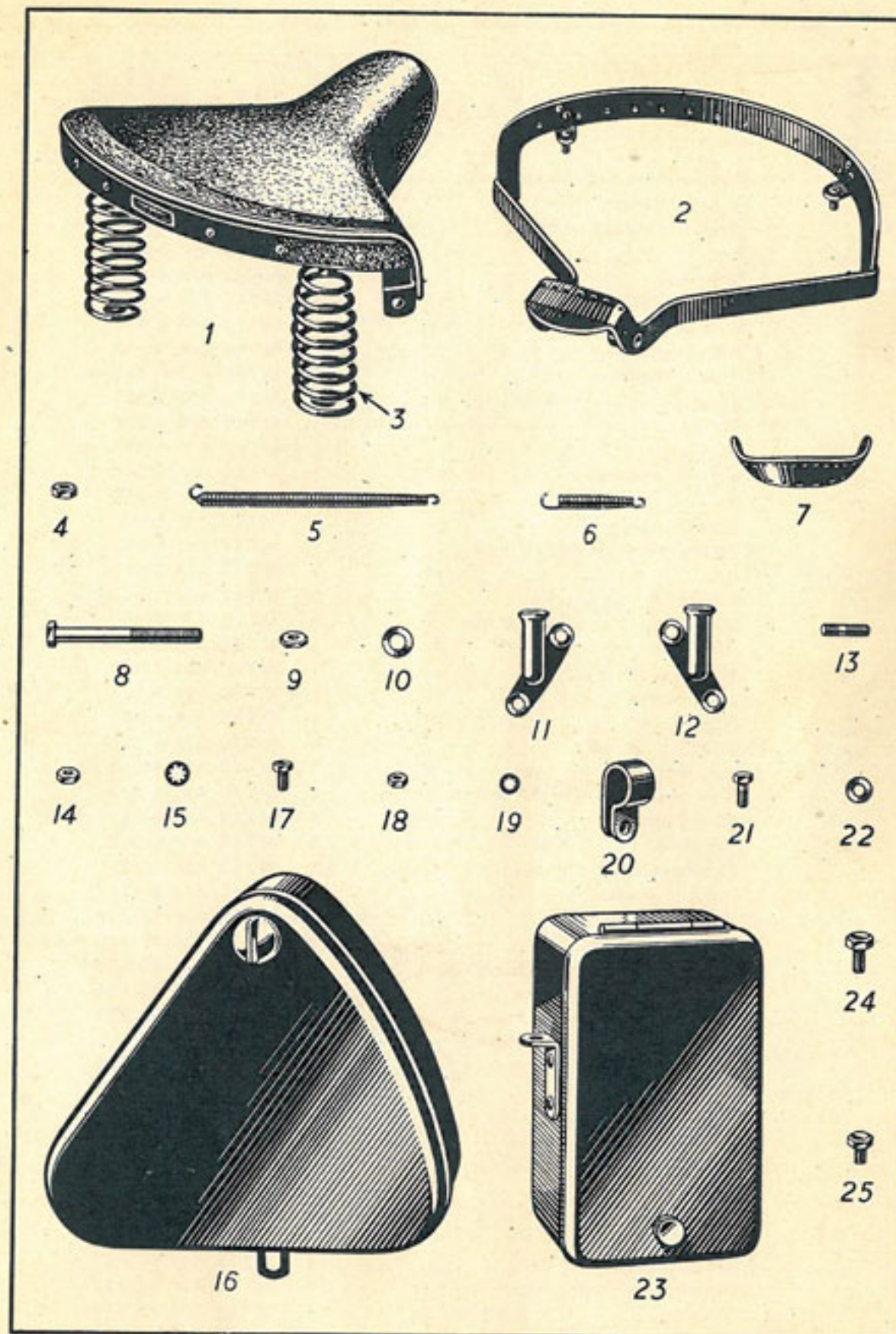
Illus. No.	No. of part.	Description.	No. per set	M.T. or Proprietary No.	£	s.	d.
1	28437	Prop stand	1		0	8	6
2	28416	eye bolt	1		0	1	6
3	15312	" " " " $\frac{7}{16}$ " nut	1		0	0	2
4	27919	" " " " Shakeproof washer	1	MT5/9705	0	0	1
5	15253	" " pivot pin	1		0	0	3
6	27001	" " " " $\frac{5}{16}$ " lock nut	1		0	0	1
7	28594	" " spring clip	1		0	1	0
8	252	" " " " $\frac{1}{4}$ " pin, $\frac{1}{2}$ " long	1		0	0	2
9	26998	" " " " nut	1		0	0	1
10	27916	" " " " Shakeproof washer	1	MT5/24861	0	0	1
11	28261	Pillion footrest	2		0	2	6
12	6672	" " pivot bolt	2		0	0	2
13	26997	" " " " $\frac{3}{16}$ " nut	2		0	0	1
	28416	" " eye bolt (as illus. 2)	2		0	1	6
	15312	" " " " $\frac{7}{16}$ " nut (as illus. 3)	2		0	0	2
	27919	" " " " Shakeproof washer (as illus. 4)	2		0	0	1
14	28528	" " bracket (R.H.)	1		0	2	6
15	28529	" " " " (L.H.) with eye bolt	1		0	6	0
	23901/2	Front chain case assembly	1		3	16	0
16	23901	" " " (inner portion)	1		1	12	0
17	23902	" " " (outer ")	1		1	15	0
18	28002	" " drain plug	1	MT1/17302	0	0	6
19	28003	" " washer	1	MT1/37033	0	0	2
20	26696	" " main joint washer (rubber)	1		0	4	6
21	23940	" " spigot washer (rubber)	1		0	1	0
22	27080	" " inspection cover	1		0	1	0
23	22708	" " " " washer	1		0	0	3
24	22992	" " felt washer	1		0	0	4
25	14091	" " " " $\frac{5}{16}$ " attachment pin	1		0	0	2
26	22937	" " " " steel washer	1		0	0	1
27	22938	" " " " leather " "	1		0	0	1
28	23941	" " " " packing collar	1		0	0	1
29	27236	" " " " locking plate	1		0	0	1
30	24084	" " " " packing collar (rear)	1		0	0	6
31	27288	Rear chainguard (top)	1		0	10	0
32	3699	" " " " $\frac{5}{16}$ " pin, $\frac{1}{2}$ " long	1		0	0	3
33	12445	" " " " distance piece (bottom)	1		0	3	6
34	27265	" " " " (front, $\frac{1}{2}$ " long)	1		0	0	3
35	2545	" " " " packing collar (as illus. 33)	1		0	0	1
	12659	" " " " (rear, $\frac{1}{2}$ " long)	1		0	0	2
36	12659	" " " " (rear, $\frac{1}{2}$ " long)	1		0	0	2
37	27344	Front chain $\frac{1}{4}$ " P x .305" W x .335" R 103 links	1	MT11/17163	0	10	0
38	27345	Rear chain, " " " " 74 "	1	MT11/10306	0	17	6



See opposite page for description and price.

SADDLE AND TOOLBOXES

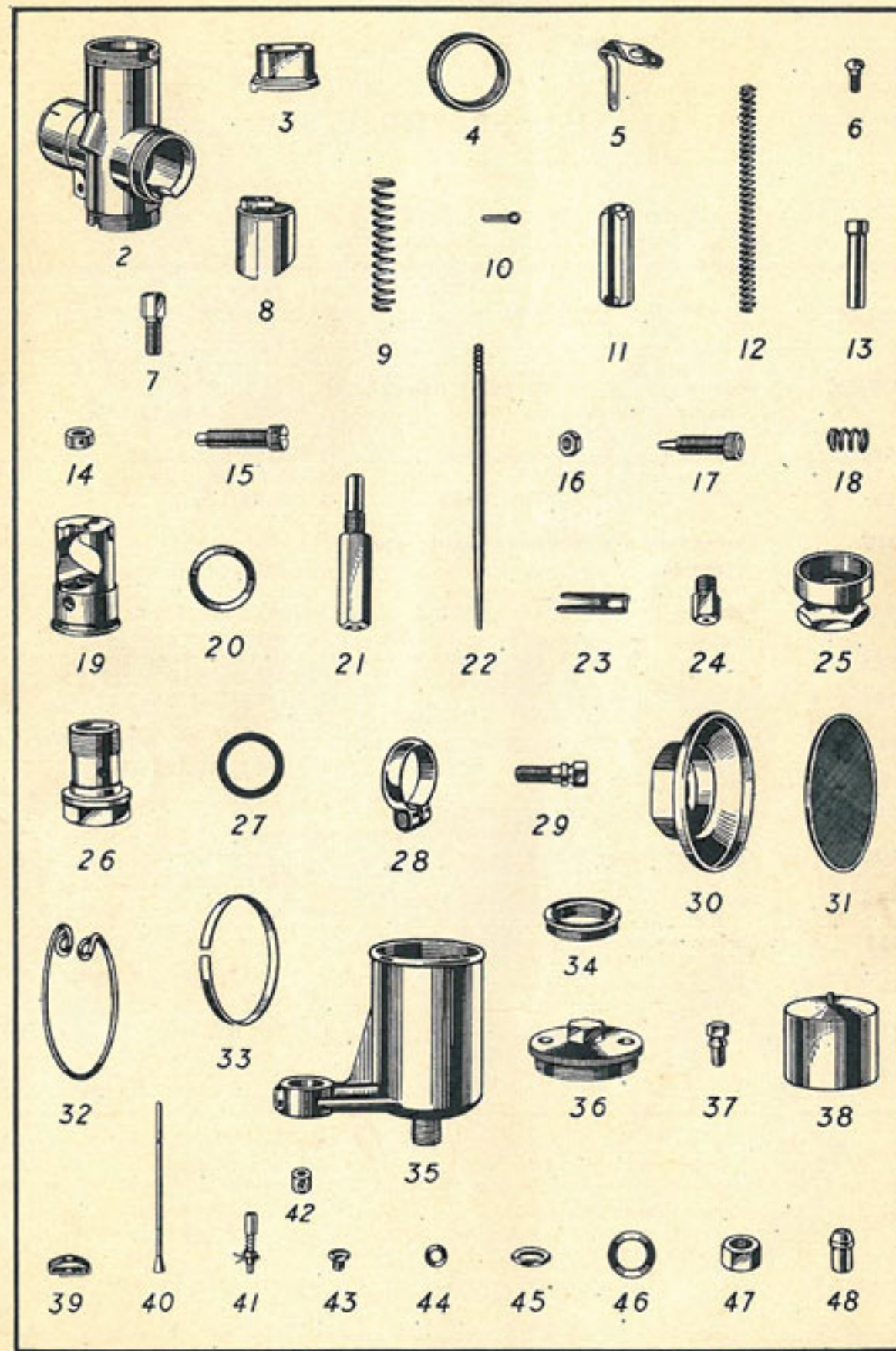
Illus. No.	No. of part.	Description.	No. per set	M.T. or Proprietary No.	£	s.	d.
1	25142	Saddle complete	1	MT1/TE/S787	1	5	0
	28693	waterproof top	1	MT1/TE/S787/2	0	13	6
2	28694	frame	1	Not serviced	0	7	6
3	28695	rear compression spring	2	MT1/TE/S787/4	0	1	6
4	27001	" " " nut	2		0	0	1
5	28684	seat spring (long)	13		0	0	5
6	28696	" " (short)	7		0	0	3
7	28697	" " nose plate	1		0	1	0
8	28698	pivot bolt	1		0	0	5
9	28699	" " nut	1		0	0	1
10	28970	" " washer	1		0	0	1
11	24859	attachment bracket (R.H.)	1		0	1	3
12	24860	" " (L.H.)	1		0	1	3
13	24882	" " " stud, 1 3/8" long	2		0	0	2
14	27304	" " " nut 5/16"	2		0	0	2
15	27917	" " " " "	2		0	0	2
		Shakeproof washer	2	MT5/15414	0	0	1
16	28075	Toolbox (triangular)	1		0	10	0
17	251	" 1/4" pin, 1/2" long	2		0	0	2
18	26998	" " nut	2		0	0	1
19	27916	" " Shakeproof washer	2	MT5/24861	0	0	1
20	15736	" attachment clip	1		0	0	6
21	7201	" " " 1/4" pin, 2 1/8" long	1		0	0	2
	26998	" " " nut (as illus. 18)	1		0	0	1
22	7674	" attachment clip pin washer (rectangular)	1		0	0	1
23	28133	" " " "	1		0	9	6
24	10142	" 5/16" pin, 1 1/8" long	1		0	0	2
25	14445	" " " "	1		0	0	2
	27001	" " nut (as illus. 4)	2		0	0	2
	27917	" Shakeproof washer (as illus. 15)	2	MT5/15414	0	0	1



See opposite page for description and price.

AMAL CARBURETTOR

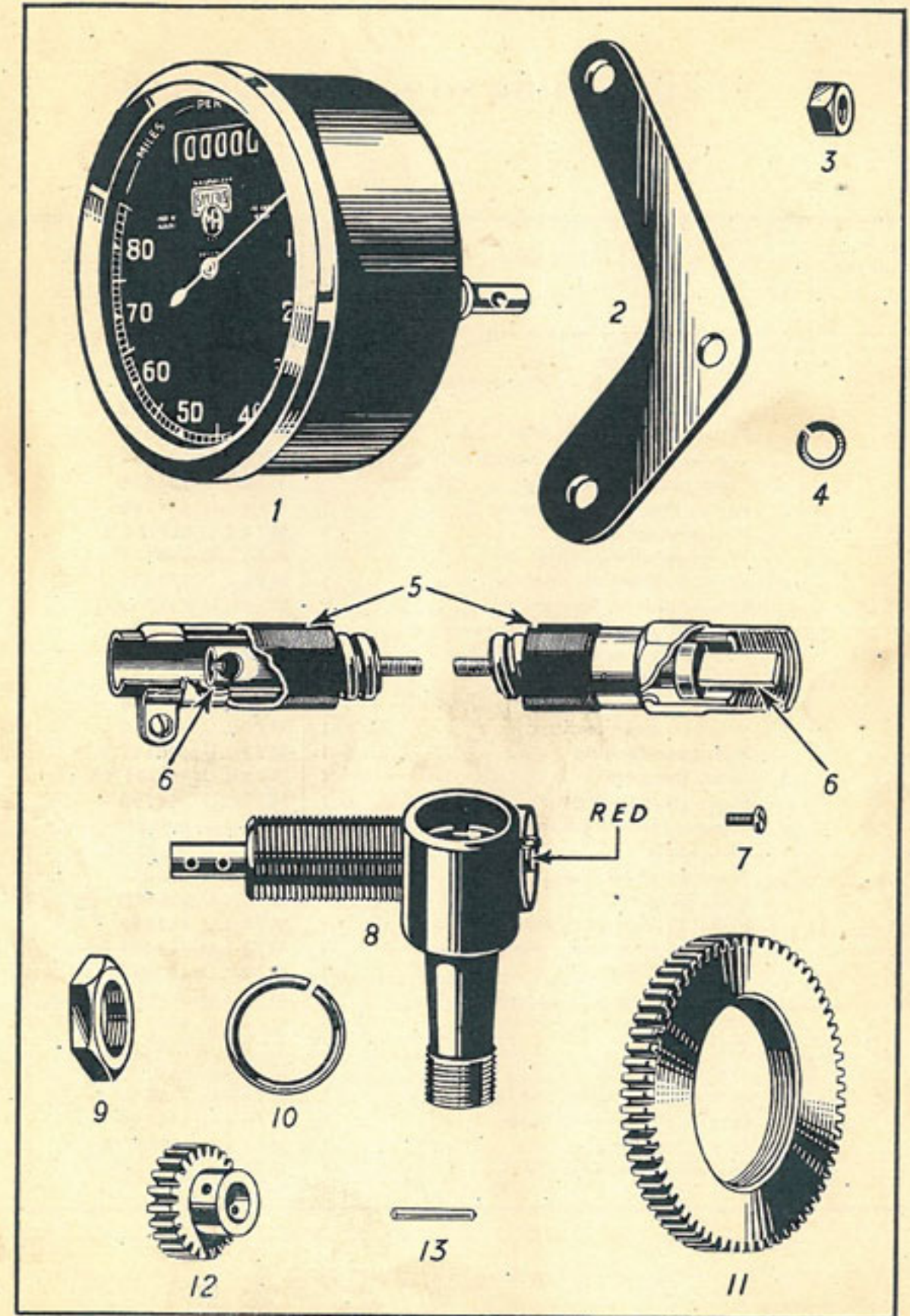
Illus. No.	No. of part.	Description.	No. per set	M.T. or Proprietary No.	£ s. d
		Carburettor complete less controls and cables	1	MT12/AM/274B/1A ..	
2		Body, mixing chamber	1	MT12/AM/274/022R ..	
3		Top, " "	1	MT12/AM/4/032 ..	
4		Cap, " "	1	MT12/AM/4/031 ..	
5		Spring, Cap	1	MT12/AM/4/235 ..	
6		Screw, Cap spring	1	MT12/AM/4/241 ..	
7		Adjuster, cable	2	MT12/AM/4/035 ..	
8		Valve, throttle	1	MT12/AM/4/052/No. 5	
9		Spring, " valve	1	MT12/AM/4/037 ..	
10		Cotter, " "	1	MT12/AM/4/060 ..	
11		Valve, air	1	MT12/AM/4/045 ..	
12		Spring, air valve	1	MT12/AM/4/046 ..	
13		Guide, " "	1	MT12/AM/4/047 ..	
14		Nipple, cable	2	MT12/AM/1482 ..	
15		Screw, throttle adjusting	1	MT12/AM/4/063 ..	
16		Nut, " " screw	1	MT12/AM/16/010 ..	
17		Screw, air adjusting	1	MT12/AM/13/129 ..	
18		Spring, " " screw	1	MT12/AM/4/148 ..	
19		Block, jet, complete	1	MT12/AM/204/059R ..	
20		Washer, jet block	1	MT12/AM/4/040 ..	
21		Jet, needle	1	MT12/AM/4/061 ..	
22		Needle, jet	1	MT12/AM/4/065 ..	
23		Clip, " needle	1	MT12/AM/4/230 ..	
24		Jet, main	1	MT12/AM/4/042/85 ..	
25		Nut, mixing chamber union	1	MT12/AM/4/062 ..	
26		Bolt, holding	1	MT12/AM/4/043 ..	
27		Washer, " bolt	2	MT12/AM/4/053 ..	
28		Clip, outlet	1	MT12/AM/4/207 ..	
29		Pin, " clip	1	MT12/AM/4/048 ..	
30		Body, air intake	1	MT12/AM/30/109 ..	
31		Gauze, " "	3	MT12/AM/30/110 ..	
32		Clip, air intake gauze, spring	1	MT12/AM/30/060 ..	
33		Ring, split, air intake	1	MT12/AM/30/111 ..	
34		Adaptor, " "	1	MT12/AM/30/129 ..	
35		Chamber, float, complete	1	MT12/AM/1A ..	
36		Body, float chamber	1	MT12/AM/64/156 ..	
37		Cover, " "	1	MT12/AM/14/208 ..	
38		Screw, lock, cover	1	MT12/AM/14/021 ..	
39		Float	1	MT12/AM/14/015 ..	
40		Spring, bow, float	1	MT12/AM/14/014 ..	
41		Needle, valve	1	MT12/AM/14/024 ..	
42		Tickler assembly	1	MT12/AM/22/021/14/032/033 ..	
43		Stop, tickler	1	MT12/AM/14/210 ..	
44		Screw, platform plug	1	MT12/AM/13/153 ..	
45		Washer, " " screw	1	MT12/AM/14/039 ..	
46		Locknut, seating	1	MT12/AM/14/178 ..	
47		Washer, " locknut	1	MT12/AM/14/175 ..	
48		Nut, petrol union	1	MT1/18851 ..	
		Nipple, " " nut	1	MT1/19110 ..	



See opposite page for description and price.

SMITH'S SPEEDOMETER

Illus. No.	No. of part.	Description.	No. per set	M.T. or Proprietary No.	£	s.	d.
1	S433/B/EX ..	Speedometer head 80 miles non-trip non-illuminated	1	MT1/SM/S433B/Ex ..	1	7	6
2	P25519/5413	Bracket for speedometer head ..	1	MT1/SM/25519 ..	0	2	9
3	N1115 ..	Nut for fixing bracket to head ..	1	MT5/15915	0	0	2
4	W7216 ..	Spring washer for head fixing stud (per doz.)	1	MT5/49947	0	0	6
	SK52149 ..	Flexible drive complete 1ft. 9in. ..	1	MT1/SM/52149/22 ..	0	13	3
5	P53386 ..	" " outer cable assembly ..	1	Not serviced	0	6	8
6	P53385 ..	" " inner " "	1	MT1/SM/53385/22 ..	0	6	8
7	S2081 ..	Screw for securing inner cable to speedometer	1	MT1/SM/S2081 ..	0	0	2
8	X25384/5413	Reduction gear box complete ..	1	0	13	9
9	P25200 ..	Lock nut for gear box	1	0	0	6
	27494 ..	Speedometer gear box positioning nut	1	0	0	6
10	W7259 ..	Spring washer for gear box	1	0	0	1
11	27193 ..	Speedometer driving wheel	1	0	2	6
12	27191 ..	" driven " "	1	0	2	0
13	13810 ..	" " " taper pin	1	0	0	6



See opposite page for description and price.

LUCAS "MAGDYN0" EQUIPMENT

Illus. No.	No. of part.	Description.	No. per set	M.T. or Proprietary No.	£ s. d.
		Magdyno, type Mo1/4.H3	1	MT8/LU/465112 ..	
		Cup, insulation	1	MT8/LU/463932 ..	
		Holder, earth brush, c/w brush and spring	1	MT8/LU/460380 ..	
		Brush and spring earth	1	MT8/LU/451323 ..	
		Washer, fibre earth brush holder	1	MT8/LU/162674 ..	
		Pickup assembly	1	MT8/LU/463066 ..	
		Brush and spring, pickup	1	MT8/LU/451260 ..	
		Nut, pickup cable	1	MT8/LU/M3156/4 ..	
		Washer, spring, cable end	1	MT8/LU/185008 ..	
		Washer, seating, pickup	1	MT8/LU/455622 ..	
		Screw, pickup fixing	2	MT8/LU/110064 ..	
		Washer, pickup fixing screw	2	MT5/49945 ..	
		Armature assembly	1	MT8/LU/463988 ..	
		Bearing, ball, complete	2	MT8/LU/189294 ..	
		Gears, set of	1	MT8/LU/462863 ..	
		Washer, gear locking	1	MT8/LU/463113 ..	
		Nut, gear locking	1	MT8/LU/463117 ..	
		Gear, dynamo	1	MT8/LU/M1951/1A ..	
		Screw, dynamo gear	1	MT8/LU/111700 ..	
		Washer, locking dynamo gear	1	MT8/LU/M353/1 ..	
		Nut, shaft	1	MT8/LU/M2635/2 ..	
		Washer, shaft nut	1	MT8/LU/140074 ..	
		Key, woodruff	1	MT8/LU/M450/1 ..	
		Plate, drive end cover	1	MT8/LU/463989 ..	
		Screw, fixing D/E cover plate	4	MT8/LU/113229 ..	
		Plate C/B end	1	MT8/LU/463982 ..	
		Screw, fixing C/B end plate	2	MT8/LU/M2976/4 ..	
		Washer, packing, fibre	1	MT8/LU/451379 ..	
		Terminal	1	MT8/LU/186471 ..	
		Washer, spring	1	MT5/49946 ..	
		Screw, grub, for terminal	1	MT4/CB/5335/91 ..	
		Screw, end plate to body	1	MT4/LU/115580 ..	
		Screw, terminal	1	MT8/LU/M3207/2 ..	
		Control parts, sets	1	MT8/LU/463107 ..	

LUCAS "MAGDYN0" EQUIPMENT—Contd.

Illus. No.	No. of part.	Description.	No. per set	M.T. or Proprietary No.	£ s. d.
		Nipple, control	1	MT8/LU/455788 ..	
		Cap, rubber	1	MT8/LU/M2841/4 ..	
		Cam	1	MT8/LU/463853 ..	
		Ring, jump, for cam	1	MT8/LU/M2646/1 ..	
		Cover C/B	1	MT8/LU/M2648/1 ..	
		Spring and pin assembly	1	MT8/LU/463907 ..	
		Contact breaker, complete	1	MT8/LU/MLCB1 ..	
		Bush, insulating C/B centre	1	MT8/LU/M2679/4 ..	
		Contact set	1	MT8/LU/484098 ..	
		Tappet	1	MT8/LU/M2687/1 ..	
		Screw, fixing C/B	1	MT8/LU/M1290/1 ..	
		Washer, lock, for C/B fixing screw	1	MT8/LU/M2689/1 ..	
		Strap, fixing dynamo	1	MT8/LU/M3517/1 ..	
		Dynamo	1	MT8/LU/200285 ..	
		Screw, fixing pole piece	1	MT4/LU/L2146/5 ..	
		Coil, field	1	MT8/LU/200188 ..	
		Cover band assembly	1	MT8/LU/200238 ..	
		Bracket assembly, drive end	1	MT8/LU/200353 ..	
		Plate, bearing	1	MT8/LU/200262 ..	
		Screw, bearing plate fixing	2	MT8/LU/M940/2 ..	
		Screw, fixing dynamo to magdyno	1	MT8/LU/123063 ..	
		Nut for Dynamo fixing screw	1	MT8/LU/169010 ..	
		Armature	1	MT8/LU/200304 ..	
		Bearing, ball, drive end	1	MT7/6069 ..	
		Nut D/E bearing	1	MT8/LU/200224 ..	
		Key, woodruff	1	MT8/LU/M450/1 ..	
		Bracket assembly, C/E complete with bush	1	MT8/LU/200269 ..	
		Bush, bearing C/E	1	MT8/LU/200231 ..	
		Plate, insulation c/w brush boxes	1	MT8/LU/200253 ..	
		Screw, fixing spring and lever arm	2	MT8/LU/106130 ..	
		Brushes, sets	1	MT8/LU/200290 ..	
		Springs, brush sets	1	MT8/LU/200079 ..	
		Cover, commutator end	1	MT8/LU/200354 ..	
		Screw, fixing C/E cover	1	MT8/LU/100000 ..	
		Screw, locating C/E cover	1	MT8/LU/103513 ..	

LUCAS "MAGDYNO" EQUIPMENT—Contd.

Illus. No.	No. of part.	Description.	No. per Set	M.T. or Proprietary No.	£ s. d.
	2	Terminal	2	MT8/LU/200229 ..	
	4	Nut, terminal	4	MT5/16599	
	2	Sleeve, terminal	2	MT3/LU/188818 ..	
	1	Plate, terminal clamp	1	MT8/LU/200212 ..	
	1	Screw, " " plate	1	MT8/LU/109667 ..	
	2	Bolt, through fixing	2	MT8/LU/200227 ..	
	2	Nut " " bolt	2	MT8/LU/168788 ..	
	1	Sparking plug	1	MT4/9324	
	1	" " washer	1	MT1/37628	
	A/R	Cable H.T.	A/R	MT4/7930	
	1	Terminal, H.T. cable end	1	MT4/1823	
	1	Resistor, plug type	1	MT4/21386	
	1	Immobiliser	1	MT4/18869	
	A/R	Cable, lighting and charging circuit	A/R	MT4/18683	
	1	Control box, type MCR1/L15	1	MT4/LU/390715 ..	
	1	Plate assembly, terminal clamping	1	MT4/LU/390723 ..	
	1	Screw, plate fixing	1	MT4/LU/100713 ..	
	4	Sleeve, terminal	4	MT3/LU/188818 ..	
	1	Cover, cutout	1	MT4/LU/390460 ..	
	1	Clip, spring, cutout cover	1	MT4/LU/390461 ..	
	1	Battery, secondary 8V.12a. hrs. type PUW 7E-5	1	MT4/80230	
	3	Plug, vent	3	MT4/LU/S2254/1 ..	
	1	Cover, moulded	1	MT4/LU/S2171/1B ..	
	1	Connector, positive cable	1	MT4/LU/B906	
	1	Bolt, U type c/w nuts	1	MT4/LU/SW784P ..	
	2	Nut for U bolt	2	MT4/LU/B918	
	1	Connector, battery, positive	1	MT4/LU/B900	
	1	Horn c/w bracket	1	MT3/LU/701418 ..	
	1	Bracket (replacement unit)	1	MT3/LU/701064 ..	

LUCAS LAMPS

Illus. No.	No. of part.	Description.	No. per set	M.T. or Proprietary No.	£ s. d.
HEADLAMP.					
	1	Headlamp assembly	1	MT3/LU/DU42/MAG ..	
	1	Body " " " "	1	MT3/LU/515677 ..	
	2	Screw, lamp fixing	2	MT3/LU/112209 ..	
	2	Washer, " " screw	2	MT3/LU/137141 ..	
	1	Cord, rubber	1	MT3/LU/NB398/8 ..	
	1	Clasp assembly c/w stud, rim fixing	1	MT3/LU/516047 ..	
	1	Wire, clasp fixing	1	MT3/LU/NB398/3 ..	
	3	Screw, panel " " " "	3	MT3/LU/106798 ..	
	3	Washer, " " screw	3	MT5/49945	
	1	Reflector assembly	1	MT3/LU/NB398/36 ..	
	1	Wire, back shell fixing	1	MT3/LU/NB398/10 ..	
	1	Reflector, back shell assembly	1	MT3/LU/515650 ..	
	1	Holder assembly, main bulb	1	MT3/LU/504801 ..	
	1	Adaptor, pilot bulb holder assembly	1	MT3/LU/504803 ..	
	1	Clip and screw, bulb holder, retaining	1	MT3/LU/N890	
	1	Screw, bulb holder clip	1	MT3/LU/NC301/34 ..	
	1	Bulb, main	1	MT3/12534	
	1	" " pilot	1	MT3/47174	
	1	Mask, W.O. pattern	1	MT3/84604	
	1	*Rim assembly less glass	1	MT3/LU/515678 ..	
	4	Wire, glass fixing	4	MT3/LU/NB317/41 ..	
	1	Bead, langite, glass joint	1	MT3/LU/NC309/6 ..	
	1	*Glass, difusa	1	MT3/LU/NG13/110 ..	
	1	Panel complete	1	MT3/LU/308370 ..	
	1	Ammeter	1	MT3/LU/364461 ..	
	1	Ring, rubber	1	MT3/LU/364010 ..	
	1	Switch, lighting	1	MT3/LU/351590 ..	
	7	Screws for terminals	7	MT3/LU/120514 ..	
	1	Ring, rubber	1	MT3/LU/NB2404/24 ..	
	1	Spring, switch fixing	1	MT3/LU/308234 ..	
	1	Rotor assembly	1	MT3/LU/351593 ..	
	1	Handle, with fixing screw	1	MT3/LU/351567 ..	
	1	Screw, handle fixing	1	MT4/LU/105751 ..	
	A/R	Sleeve, cable ends, for regulator and head lamp connections	A/R	MT3/LU/188818 ..	
	A/R	Clips, cable fixing	A/R	MT4/24605	
TAIL LAMP.					
	1	Lamp, tail, complete	1	MT3/WDMCT1	
	1	Case complete with ruby	1	MT3/LU/525890 ..	
	1	Spring, case retaining	1	MT3/LU/525886 ..	
	1	Bulb	1	MT3/47174	
	1	Interior, bulb holder, set of parts	1	MT3/LU/525897 ..	
	1	Connector complete with cover	1	MT3/LU/SA147 ..	

* Parts marked thus not required if W.O. mask part No. MT3/84604 is fitted.

*This List is
compiled and published by*
THE ENFIELD CYCLE CO. LTD.

